

THE FOUNDATION FOR ENHANCING COMMUNITIES



THEN...NOW...FOREVER

2021
ANNUAL REPORT

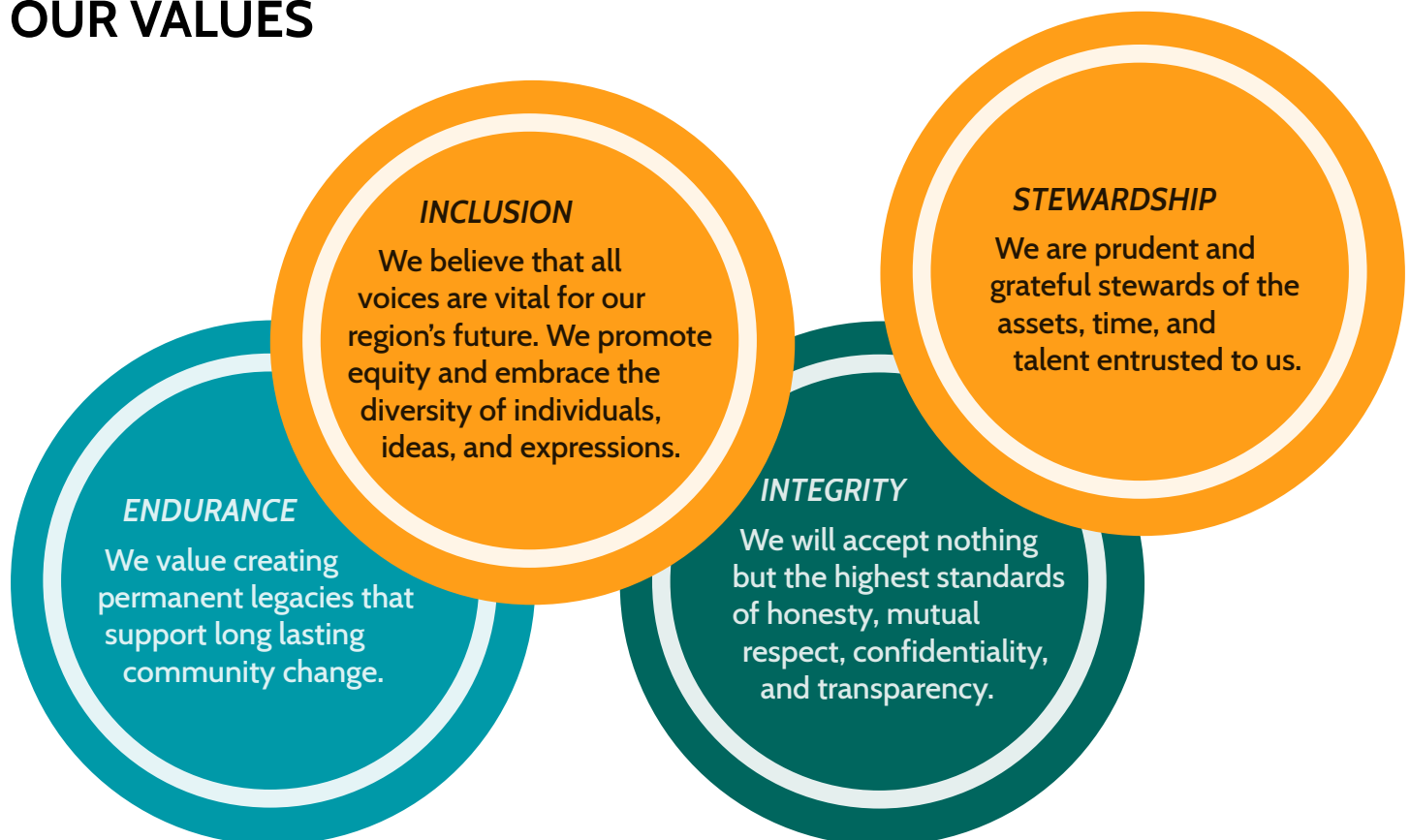
TFEC'S MISSION & VALUES

OUR MISSION

Inspire giving by partnering with donors to achieve their charitable goals, and strengthen our local communities by investing in them now and for future generations.



OUR VALUES



THIS ANNUAL REPORT IS DEDICATED TO THE MEMORY OF JIM MARTIN

In 2021, TFEC lost our beloved friend and colleague, Jim Martin.

He was a Senior Financial Services Associate for The Foundation for Enhancing Communities for almost 14 years.



TABLE OF CONTENTS

2	LETTER FROM THE PRESIDENT & CHAIR	35	FEATURED PROJECT: RANDI'S HOUSE OF ANGELS
4	TFEC'S CENTENNIAL CELEBRATION	36	REGIONAL FOUNDATIONS
10	THE COVID-19 COMMUNITY RESPONSE FUND	36	Greater Harrisburg Community Foundation (1920)
12	CAPACITY BUILDING: ASSISTING OUR LOCAL NONPROFITS	40	Mechanicsburg Area Community Foundation (1986)
13	TFEC'S COMMITMENT TO DIVERSITY, EQUITY, AND INCLUSION	42	Franklin County Community Foundation (1987)
14	INVESTING WITH TFEC	44	Perry County Community Foundation (1987)
17	STATEMENT OF FINANCIAL POSITION	46	Dillsburg Area Community Foundation (2004)
18	TFEC BY THE NUMBERS	48	TFEC'S EARLY EDUCATION INITIATIVE
20	START YOUR CHARITABLE JOURNEY	50	TFEC'S EMERGING PHILANTHROPISTS PROGRAM
21	GIVE WHERE YOU LIVE	52	TFEC'S FUND FOR WOMEN & GIRLS
23	TFEC PROPERTIES, INC.	55	THE COUNCIL ON FOUNDATIONS NATIONAL STANDARDS
24	CORPORATE SOCIAL RESPONSIBILITY	56	NONPROFIT SERVICES
26	SCHOLARSHIPS	58	2022 BOARD OF DIRECTORS
28	LEGACY GIVING	59	TFEC STANDING COMMITTEES
30	NEW FUNDS	60	2022 TFEC TEAM AND CONSULTANTS
32	NEW PROJECTS	61	TFEC TEAM FUND
34	FEATURED PROJECT: THE GIVING TREE OF HUMMELSTOWN & HERSHEY	62	TFEC TEAM ANNIVERSARIES

LETTER FROM THE PRESIDENT & CHAIR

March 2022

The Foundation for Enhancing Communities is delighted to present our Annual Report for 2021.

The Foundation for Enhancing Communities (TFEC) and our five Regional Foundations, the Dillsburg Area Community Foundation, Franklin County Community Foundation, The Greater Harrisburg Community Foundation, Mechanicsburg Area Community Foundation and the Perry County Community Foundation, had another exciting and productive year despite all the challenges presented by the pandemic.

We stayed ahead of the challenges of the second year of the pandemic by working closely together with our entire team to let them know what we could do to assist them with getting vaccination and booster shots, wearing masks and working in a hybrid mode, remotely two days a week and three days a week in the office.

We were so pleased to see people thinking of assisting others less fortunate by giving contributions into the COVID-19 Community Response Fund we established with the United Way of the Capital Region, as our partner. We, together, made many grants out of the fund to nonprofits, which applied for some assistance with their COVID expenses. Overall, it was a year of challenges and adjusting our path every day to accommodate the challenges and changes going on.

We ended 2021 with a total of 32 new funds, management agreements and projects. Our total contributions for 2021 totaled \$8.2 million, which brought our total assets at year-end to \$145.7 million. An awesome number for the unusual year.

Though 2021 was a good year in many ways, it was another year of cancellations and postponements for us. We again cancelled our major 100th Anniversary

Gala event on Saturday, September 16th but were able to hold our Anniversary events in Mechanicsburg, Chambersburg, Perry County and Harrisburg, as planned. The events were fun and brought out many people in each area to celebrate.

Our board of directors, chaired by Carolyn Dumaresq, was pleased to welcome two new board members, Todd Snovel of the Pennsylvania School for the Arts and Design and Marlene Kanuck, a community volunteer especially in the LGBTQ community. We said goodbye to Bob Dolan, retired volunteer, Richard Spiegelman, retired attorney, and Greg Royer of Royer Flowers. We sincerely thank them for their time, expertise and resources. We will miss them.

The Fund for Women and Girls postponed all their events in 2021, due to COVID. Kelly Light, our capable Chair for the past two years, stepped down and Todd Snovel, Vice Chairman stepped into the role of Chairman. Miriam DeFehr agreed to serve as Vice Chair. We thank Kelly for her leadership and dedication and wish her well.

Our capable and cohesive TFEC Team of 17 professionals are most critical in meeting the annual strategic goals and objectives of a thriving, flexible, rapidly changing organization. Each one is valued and respected. We said goodbye to Andrea Iguina who made a career change and moved to Puerto Rico. We lost Jim Martin, Senior Financial Services Officer of 15 years, when he suddenly passed away in August. We will all miss him. We said hello to Dawn Brotherton, Philanthropic Officer, Yamit Friedman, Community Investment Associate, Tameka Rice, Financial Services Associate and Sharon Bass, Financial Services Associate.

We thank Spencer G. Nauman, Jr., Esq., Steve Feinour, Esq. and Benjamin Dunlap, Esq. of Nauman, Smith,



We, thank you,
our valued donors, for
providing TFEC with the
ability to work with each of
you to achieve your charitable
goals, as you follow your
philanthropic dreams and
support your favorite
charities.

Shissler & Hall, for their proficient legal advice, and thank Bob Caplan, MBA, CFA, Wealth Advisor of River Wealth Advisors, LLC, for his investment leadership and for his service as chair of the Investment Advisory Committee and Connie Siegel, Special Investment Consultant of Conrad Siegel for their excellent investment service.

We thank you, our valued donors, for providing TFEC with the ability to work with each of you to achieve your charitable goals, as you follow your philanthropic dreams and support your favorite charities. We thank you for the opportunity to serve as your partner in your personal philanthropy. Your dedication and commitment to making the region a better place to live, work and play is a precious gift we cherish and value through your leadership and generous sharing of resources. Thank you for your ideas, suggestions

and dedication to your philanthropy. We appreciate your attention to details, suggestions and for your willingness to permit us to assist you with our services to meet your philanthropic goals. As always, the seeds sown in the past are constantly presenting themselves now in the form of new funds, projects, management agreements, estates and bequests. We thank you for helping us to plant new seeds and when ready, to harvest them in the future.

If you have questions or would like additional information about any of our services and products, please contact Janice R. Black, President and CEO at Jblack@tfec.org, or at 717-236-5040. Visit our website at www.tfec.org for regular updates on general information about the overall organization, grants, scholarships, our electronic newsletters, news and events.



Sincerely,

A handwritten signature in black ink that reads "Janice R. Black".

Janice R. Black
President and CEO

A handwritten signature in black ink that reads "Carolyn C. Dumaresq".

Carolyn Dumaresq
Chair



More Than a Century of Service 1920 — 2021

One of the many ways TFEC serves Central Pennsylvania is through its ability to help with what is needed most, when it is needed most. September 2021 marked TFEC's Centennial (+1) Anniversary. TFEC had events scheduled throughout the community to celebrate this milestone, but due to the ongoing COVID-19 Pandemic, our focus shifted from celebrating to continuing to serve our community. Very quickly in 2020, TFEC established the COVID-19 Community Response Fund in partnership with United Way of the Capital Region and continued to support our local nonprofits throughout 2021. Read more about the impact of this on pages 10 and 11.

As we continue to define the new normal in 2022, TFEC will be here for you. We were able to celebrate a handful of our regions with various gifts and celebrations in the later half of 2021, while some events originally scheduled for 2021 were postponed until 2022.

To close out our centennial celebration, TFEC established two new funds in honor of our anniversary to strengthen TFEC's commitment to current community needs. The TFEC Animal Welfare Fund and the TFEC Community Development Fund were created at the end of 2021. These funds were added to previously established area of interest funds: Arts and Culture Fund, Early Education Fund, Environmental Stewardship Fund, Health and Human Services Fund, and Youth Development Fund. Also, three additional funds were set up to address diversity, equity, and inclusion to add to our existing funds. In total, TFEC has six funds dedicated to creating change in the sphere of diversity, equity and inclusion that you can read about on page 13.

The **Animal Welfare Fund** was created to support programs, projects, and organizations that promote the welfare and safety of animals and their habitats or communities.



TFEC's Community Development Fund

supports programs and projects that affect change, equity, and improvement in the lives of all community members. Through partnership and collaboration, the TFEC Community Development fund awards grants to organizations that improve the appearance, safety, culture and much more of our neighborhoods.



\$415,000

Permanent
Investment for
Local Nonprofits

Agency Match

Helping local nonprofit organizations build permanent and consistent streams of revenue is part of The Foundation for Enhancing Communities' (TFEC) mission. In the recent conclusion of TFEC's Centennial Agency Match Campaign, TFEC engaged organizations that currently have an agency fund at the foundation and offered a \$250,000 match pool for all new funds raised from March 1, 2021 — September 1, 2021.

In total, \$415,657.60 was raised to support eight participating organizations and their agency funds.

"Growing an agency fund requires steadfast dedication to the principle of investing in the future," says Janice Black, President, and CEO of TFEC. "The goal of this

campaign was to provide our

nonprofit partners the opportunity to achieve a key measure of financial stability and carry out their mission for generations to come."

There were eight participating organizations including:

1. Alder Health Services
2. Central Pennsylvania Food Bank
3. Franklin County Library System
4. Gretna Theatre
5. Humane Society of Harrisburg Area, Inc.
6. Market Square Concerts
7. Perry County Literacy Council
8. Waynesboro Community Concert Association

Participating organizations received resources and information that they could use to raise additional funds for their endowment such as: sample press kits, sample social media posts, and a guide to running an effective endowment building campaign.

The Centennial Agency Match campaign allowed TFEC to engage and educate local nonprofit organizations on the importance of growing their endowment fund and investing in a permanent, stable source of income and the longevity of their organization in support of the great work they are doing in their communities.



*"Growing an
agency fund requires
steadfast dedication to
the principle of investing
in the future."
Janice Black*

In honor of TFEC's Centennial (+1) anniversary, TFEC celebrated by providing a gift to each of our regions in honor of their unique place in our area. Franklin County, Harrisburg, Mechanicsburg, and Perry County all had celebrations in 2021, while Dillsburg and Lebanon County will celebrate in 2022.

Harrisburg

In honor of The Foundation for Enhancing Communities' (TFEC) 100th and International Institute for Peace Through Tourism's (IIPT) 5th anniversaries, Exemplar's Grove, on the corner of Front Street and Verbeke Street, received additional upgrades. Twelve trees, six benches, and two stone markers enhanced the newest section of Riverfront Park were presented by TFEC.

TFEC celebrated the Harrisburg community by supporting the above enhancements of Exemplar's Grove and the recent construction of the Commonwealth Monument: A Gathering at the Crossroads on the Capitol grounds.

The enhancement of Exemplar's Grove recognizes nine individuals and families who serve as exemplars for both the achievement of peace and the endurance that it takes along the way to achieving peace. A tree has been planted in honor of each exemplar for their individual contribution to achieving peace. The exemplars include:

- Mahmooda Bhatti and Momin Bhatti
- Homer C. Floyd
- Peggy Grove
- K. Leroy Irvis
- Mrs. Anne Marie Judson and Dr. John Judson
- Dr. George Love
- Rabbi Ron Muroff
- The Honorable Jeannine Turgeon
- Mrs. Maude Coleman

TFEC was also inducted into exemplar's Grove with three trees dedicated to our past (THEN), present (NOW), and future (FOREVER).



Mechanicsburg Area

TFEC celebrated the Mechanicsburg community by supporting RENAISSANCE Mechanicsburg on September 18, 2021, at the groundbreaking for a new park. RENAISSANCE Mechanicsburg's mission is to revitalize downtown Mechanicsburg to be a magnet of opportunity for business, culture, and innovation. TFEC also sponsored the Art & Wine walk by purchasing custom wine glasses for attendees.

The park is slated to be constructed in 2022 in Mechanicsburg. It will sit on the south west corner of Main Street, and will give Mechanicsburg a gathering space for residents and visitors for their enjoyment and a space for outdoor events. TFEC will support the park with a gift that will be determined in 2022.



Franklin County

TFEC honored the Franklin County community by supporting the Civil War Trails throughout the county, so that history may be remembered for generations to come. The signs were unveiled at a ceremony during AppleFest on October 16, 2021, at the 11/30 Visitors Center in Chambersburg. TFEC purchased the first two markers, and in doing so, launched the trails in Franklin County. TFEC also committed to buying two more of the many historical markers that will be placed throughout the county.

The Civil War Trails (CWT) are expected to mark between two and three dozen sites in Franklin County. Currently, CWT interprets more than 1,200 locations in Pennsylvania, Maryland, Virginia, West Virginia, North Carolina, and Tennessee.

Perry County

TFEC celebrated the Perry County community by supporting the construction of the Perry County Bicentennial Plaza at Lynn Sheaffer Dum Memorial Park. A celebration was held at the park on Oct. 24, 2021, and featured dozens of vendors and plenty of delicious food options along with several activities for children, including hayrides and the planting of 200 trees to commemorate the 200-year history of the county. TFEC purchased 200 food vouchers to give to all guests in attendance.

The plaza is a collection of historical markers detailing everything from Native American history to the 1918 influenza pandemic and more recent events. The markers were set in an oval garden-ringed plaza near the park entrance. TFEC sponsored the welcome marker to the plaza and the Pennsylvania flag pole.

Time Capsules

In the spring of 2022, TFEC will bury a time capsule at each regional celebration location to commemorate life in 2020 and 2021. Then, in 2046, each time capsule will be unearthed to illustrate to those residents the community's heartbeat 25 years ago.

Wish Gallery

The TFEC Centennial Wish Gallery, in honor of TFEC's 100th anniversary, engaged our local community to submit their hopes for the future. We asked our supporters, and nearly 40 answers were submitted to, the question: What is your wish for the community?

Throughout 2020 and 2021, TFEC collected these wishes and published them on our social media pages and on our website to encourage others to share their wishes for the community. Thirty-nine wishes were submitted on a wide range of causes: education, social justice, homelessness, and community development.

With the compiled list of community wishes, TFEC will strive to grant them in 2022 through our competitive grantmaking opportunities. Here are some examples of the wishes TFEC hopes to grant in 2022:



WHAT IS YOUR WISH FOR THE COMMUNITY?

"My wish for the community is for all people to be treated equally by government, police, and each other!"
Janice Black

WHAT IS YOUR WISH FOR THE COMMUNITY?

"I wish for everyone in our beautiful community to be blessed by books. Reading rocks!"
Susan Anthony

THE COVID-19 COMMUNITY RESPONSE FUND

More Than \$300,000 of Community Support for COVID-19 Relief

What started as a reaction to the global pandemic has grown into more than \$300,000 of aid for local nonprofits. The COVID-19 Community Response Fund, hosted by The Foundation for Enhancing Communities (TFEC) and in partnership with United Way of the Capital Region, raised and awarded \$311,233 to 98 nonprofits in Cumberland, Dauphin, Franklin, Lebanon, Perry, and Northern York (Dillsburg) Counties since March 2020. Many of the awarded organizations received funding multiple times as the pandemic continued.

"We cannot thank all of our donors, nonprofit partners, and United Way of the Capital Region enough for their continued support of the COVID-19 Community Response Fund," says Janice Black, President & CEO of TFEC. "Without our donors' commitment to the cause and the nonprofit community's dedication to service, the COVID-19 Community Response Fund would not have been nearly as successful."

"Thanks to TFEC, 156 Mission Central Care Kits (hygiene items) went out to local area school district students in Cumberland County," said Stephanie Titzel, Director of Development and Communications for Mission Central. "These assisted in mitigating the spread of COVID-19 and ensured students were able to work remotely."

The grants allowed nonprofits to continue serving their communities and those who needed help the most. Grant funds were used for personal protective equipment, technology, other equipment needs, and medical support relative to the spread of the pandemic. Many nonprofits had to close their doors because of the pandemic, but the fund's goal was to keep the region's nonprofit organizations in a position to continue serving the local community, even in the face of COVID-19.

The fund was established in March of 2020 in response to the COVID-19 Pandemic and held 16 rounds of grantmaking.



The following nonprofit organizations were awarded grant funds from the COVID-19 Community Response Fund:

Alder Health Services, Inc	Girl Scouts in the Heart of Pennsylvania	New Hope Ministries, Inc.
Alex's Lemonade Stand Foundation	Gretna Theatre	Newport Public Library
Alexander Hamilton Memorial Free Library	Habitat for Humanity of the Greater Harrisburg Area	Occupational Services Inc.
Beacon Clinic for Health and Hope	Halifax Fire Department	OnFire Youth Ministry, Inc.
Bethel Preschool and Daycare	Harrisburg Academy	PennCares
Bethesda Mission	Harrisburg Area Learning Academy, Inc.	Ronald McDonald House Charities of Central PA
Boys and Girls Club of Chambersburg and Shippensburg	Harrisburg Area Riverboat Society	School District of the City of Harrisburg
Brethren Housing Association	Harrisburg Area YMCA	Shades of Greatness, Inc.
Caitlin's Smiles, Inc.	Harrisburg Area YMCA – (Camp Curtin YMCA)	Shippensburg Area School District
Camp Hebron, Inc.	Harrisburg Fair Housing Council, Inc.	South Central Community Action Programs, Inc.
Camp Hill Presbyterian Church	Hearthstone Retirement Home	St. Stephen's Episcopal School
CandleHeart, Inc.	Hoffman Homes Inc.	St. Stephen's Episcopal Cathedral
Capital Area School for the Arts Charter School	Hope Within Ministries	The Arc of Cumberland & Perry Counties
Carlisle Area Family Life Center	Hospice of Central PA	The Campus of the Jewish Home of Greater Harrisburg
Cathedral Church of St Stephen	Jewish Family Service of Greater Harrisburg, Inc.	The Kidney Foundation of Central Pennsylvania
Center for Employment Opportunities	JFT Recovery and Veterans Support Services	The Nativity School of Harrisburg
Central Pennsylvania Food Bank	Joseph T. Simpson Public Library	The Program for Female Offenders of South Central Pennsylvania, Inc.
Central Pennsylvania Youth Ballet	Joshua Group	The Salvation Army - Carlisle Corps
Children's Aid Society	Keystone Service Systems, Inc.	The Salvation Army - Lebanon Corps
Chinese Cultural & Arts Institute	Latino Hispanic American Community Center (LHACC)	The Salvation Army Harrisburg Capital City Region
Christian Churches United of the Tri-County Area	Lebanon County Christian Ministries	The Shook Home
Christian Recovery Aftercare Ministry, Inc.	Lebanon Family Health Services, Inc.	Tri-County Opportunities Industrialization Center, Inc
Community CARES	Lebanon Rescue Mission, Inc.	Twin Valley Players
Community Check-up Center	Lebanon Valley College	Valley Youth House Committee, Inc.
CONTACT Helpline	Lebanon Valley Council on the Arts	Vision Resources of Central Pennsylvania
Cumberland County Historical Society	Lebanon Valley Volunteer in Medicine	Vista Autism Services
Cumberland Valley Animal Shelter	Leg Up Farm	Waynesboro Community & Human Services
Diakon Child, Family & Community Ministries	LGBT Community Center Coalition of Central PA	Waynesboro Day Care Center
Diakon Lutheran Social Ministries	Marion Volunteer Fire Company	Whitaker Center for Science and the Arts
Domestic Violence Intervention of Lebanon County, Inc.	Merakey Foundation	
Downtown Daily Bread	Messiah Lifeways at Messiah Village	
Farm of Hope Inc.	Mission Central Inc.	
Gamut Theatre Group, Inc.	Neighborhood Center of the United Methodist Church	
Gaudenzia, Inc.		

CAPACITY BUILDING

COVID-19 presented a unique set of challenges for nonprofit organizations and highlighted the need for internal processes that were not established. Funding, collaboration with other community organizations, marketing, public relations, and social media, all important aspects of an organization that, with the emergence of the COVID-19 pandemic, needed increased attention.

The Foundation for Enhancing Communities (TFEC) recognized the unique circumstances that impacted our local nonprofit community and partnered with Helix Strategies, LLC, to determine what these organizations needed and what they saw as emerging areas of need in both the short-term and long-term.

Our research was not based on a national pool of responses that would not apply to local charities. TFEC gathered survey information from only organizations within our geographic footprint: Cumberland, Dauphin, Franklin, Lebanon, Perry, and Northern York Counties so that our findings would be the most applicable to the local community.

TFEC uncovered nonprofits' concerns in both the short-term and long-term in needed areas of support and feelings regarding fundraising efforts in 2021. We decided that it was not enough to report these findings; we wanted to put this insight into action. TFEC held three capacity building sessions in May, June, and July of 2021 with the nonprofit community, to discuss the survey findings and provided actionable insights to support the nonprofit community during this continued difficult time.

The topics were: Engaging your Board, Volunteers, and Team during this Difficult Time; Funding and Fundraising; and All Things Operations and Programming. More than 50 local nonprofits participated in the Capacity Building Workshops.



TFEC'S COMMITMENT TO DIVERSITY, EQUITY, AND INCLUSION

The Foundation for Enhancing Communities (TFEC) embraces and supports all communities within the community. TFEC is a convener of groups who address HIV/AIDS, homelessness, LGBTQ+ issues, and health disparities in our aging population. We want to make our community a better place where everyone can thrive.

TFEC has worked over the years to combat the inequalities that our communities of color face because of the economic and social effects of systemic racism. We are committed to continuing this work until social and economic equality are fully realized for all.

We condemn the acts of hatred, injustice, racism, prejudice, and violence that black people, people of color, and those from the LGBTQ+ community and all others that have experienced injustice today and in the past.

Our board and team members stand in solidarity with communities of color. We see you, we hear you, and we will continue to be a leader in our communities to fight systemic racism and achieve equality for all regardless of race or ethnicity. We foster tolerance, safety, and respect of all people and will strive to assist to make this community one that is safe and accessible for everyone. We will lead by example to attain diversity, equality, inclusion, and unity for all.

The following are funds established by TFEC to achieve these goals.

The Aspire to Rise Scholarship Fund provides financial assistance to non-traditional students who have experienced adversity in their lives but are looking to overcome those struggles through further education.

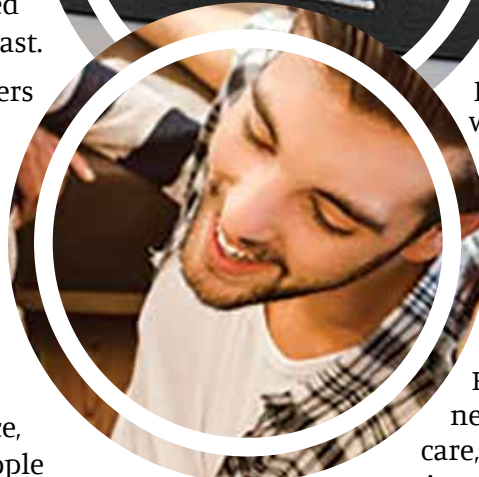
The Asian Pacific American Fund was established to support programs, projects, and/or organizations which serve to support and/or strengthen people and/or communities who define themselves as Asian Pacific Americans.

The Black Lives Matter Fund was established to support advocacy for social injustices against African Americans, for research to identify effective solutions to end police violence, to provide technical assistance to groups who advocate to end police violence, overall.

The Contigo Fund was established to strengthen programs, projects, and/or organizations which serve to support and/or strengthen people and/or communities who define themselves as Latinx.

HIV/AIDS and Substance Abuse Fund provides funds to programs, projects, and/or organizations that support HIV, AIDS, and Substance Abuse needs such as gaps in care, medical and support services, or financial resources for coping with HIV, AIDS, or substance abuse disease and may address preventative, supportive, or parallel efforts.

The LGBTQ Fund was established to strengthen programs, projects, and/or organizations which serve to support and/or strengthen people and/or communities who define themselves LGBTQ.



INVESTING WITH TFEC

A Welcome Turn to the Calendar

The final quarter of 2021 brought a more optimistic outlook following the third-quarter's concerns about COVID-19 and rising inflation. Despite news of a new Omicron variant and another wave of infections, COVID-19 cases remained less severe overall than last winter as vaccination rates continued to climb. Inflation concerns persisted, but moderated, as supply chain bottlenecks eased and inventories grew, and Congress passed a government funding bill relatively easily, avoiding a potential year-end shutdown.

Adding to one of its strongest years over the past decade, the U.S. stock market, as represented by the S&P 500 Index, saw robust returns in Q4. Small cap stocks also posted solid returns for the quarter and the year despite falling briefly into correction territory in late November amid the initial uncertainties over the Omicron variant. International developed market stocks were also positive, while emerging markets were modestly negative due primarily to China's regulatory crackdown.

Looking toward 2022, the American economy should remain healthy thanks to strong corporate profits and robust consumer spending, but inflation pressures and other headwinds will likely temper growth. In terms of TFEC's portfolio performance, Model E finished the year up nearly 24%. All other Models tracked according to our expectations, reflecting strong S&P 500 performance in our equity positions while interest-rate sensitive corners of the market placed pressure on our bond-based investments. Meeting frequently throughout the year, our Investment Committee analyzes the current economic and market factors in play and remains committed to our tried-and-true investment strategy, which is founded on resiliency, conservative approaches to our Model allocations, and is built for long-term success.

I would like to thank the Investment Committee members and staff for conducting another year's worth of meetings virtually and never losing sight of our mission to support community members seeking to create long-lasting, meaningful impact. We are privileged to be part of this more than 100-year commitment by TFEC. As we march forward into 2022, best wishes for a healthy, happy and prosperous year ahead!

Stay well,

Bob

Robert Caplan,
*Investment Advisory
Committee Chair*



Investment Models

5

TFEC has five different models you can choose from:

Model E: 100% Equities

Model ESG: 100% Equities; Socially Responsible (ESG Screening)

Model F: 100% Fixed Income

Model A: 70% Equities & 30% Fixed Income

Model M: 100% Money Market

Average Annual Returns

1 YEAR

Results are net of fees included in the mutual funds but before TFEC's fee for investment and fund management and are as of 12/31/21.

Model E: 23.6%

Model ESG: 22.9%

Model A: 15.6%

Model F: -1.6%

Please see page 16 for the complete list of investment performance.

Investment Strategy

26 YEARS

In 1996, TFEC adopted a disciplined, passive investment strategy which suggests that we not try to outperform the market in any given year. In order to realize market returns and maintain diversification at the lowest possible cost, TFEC invests in no-load, low-expense mutual funds and exchange traded funds. We hold predominantly Vanguard funds to minimize cost and provide access to every segment of the equity markets.

Passive vs. Active Management

S&P 500

S&P 500 index funds, a passive investment index, have outperformed roughly 80% of the managed large company domestic equity mutual funds over the past twenty six years. Similarly, the mid-cap and small-cap index funds have outperformed many actively managed funds of similar investment guidelines. Part of this performance is due to lower fees charged against indexed funds, low commissions paid on security transactions, and little asset turnover.

Total Return Philosophy

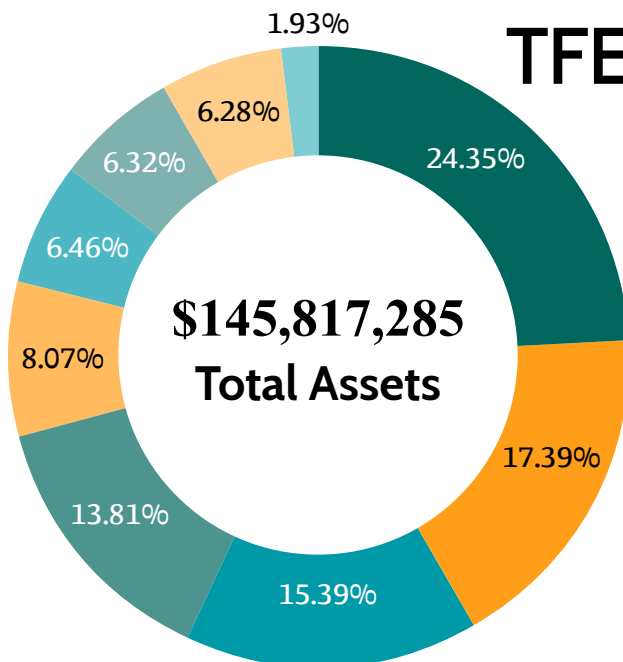
1996

Since 1996, TFEC has invested assets according to "Total Return". A total return philosophy treats all returns on investments — interest, dividends, realized and unrealized capital appreciation — as additions to principal. This spending policy allows for more predictable distributions over the long-term and ongoing grant recipients are able to rely upon a relatively stable stream of distributions.

HISTORICAL INVESTMENT PERFORMANCE

Average Annual Returns

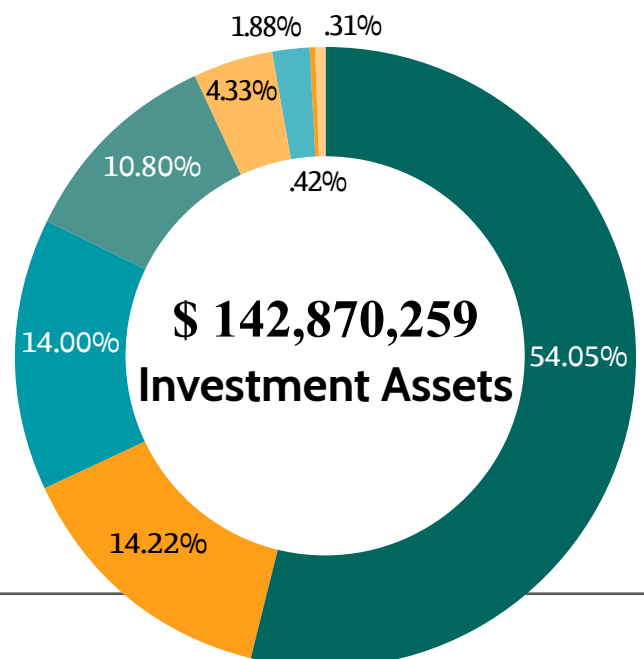
Year	100% Equity (Model E)	70% Equity & 30% Fixed (Model A)	Year	100% Fixed (Model F)	Year	100% ESG (Model ESG)
12/31/21	23.6%	15.6%	12/31/21	-1.6%	12/31/21	22.9%
3 yrs	22.1%	16.6%	3 yrs	4.5%	2 yrs (Since Inception)	20.5%
5 yrs	15.1%	11.5%	5 yrs	3.4%		
10 yrs	14.4%	10.8%	10 yrs	2.6%		
15 yrs	9.0%	7.5%	15 yrs	3.3%		
20 yrs	9.3%	7.8%	18 yrs (Since Inception)	3.4%		
26 yrs (Since Inception)	9.6%	8.3%				



T FEC'S ASSETS *as of December 31, 2021*

Restricted	\$ 35,511,331
Scholarships	25,353,580
Advised - Non-Permanent	22,440,090
Advised - Permanent	20,140,564
Split Interest Agreements (Trusts)	11,760,442
Agency	9,425,385
Unrestricted	9,216,976
Area of Interest	9,159,388
Projects	2,809,529

Large Cap Funds	\$ 77,216,805
Small Cap Funds	20,314,542
Mid Cap Funds	19,998,905
Corporate Bonds	15,431,414
Emerging Markets	6,181,303
U.S. Agency Obligations	2,685,738
Tuition Credits	602,221
International Funds	439,332



STATEMENT OF FINANCIAL POSITION

as of December 31, 2021 and 2020



ASSETS	2021	2020
Cash and investments at market value	\$ 133,740,894	\$ 111,788,668
Receivables	206,525	700,151
Prepaid expenses	44,252	33,184
Property and equipment (net)	65,166	60,107
Split interest agreements	11,760,448	10,527,981
Total Assets	145,817,285	123,110,091
LIABILITIES		
Accounts payable	250,646	862
Grants payable	564,256	694,135
Liability to resource providers	8,070,892	6,547,713
Liabilities under split interest agreements	7,953,972	7,220,052
Total Liabilities	16,839,766	14,462,762
NET ASSETS		
Without donor restrictions:		
Designated by the Board for Endowment	97,726,000	84,483,010
Undesignated	24,924,754	19,141,348
Total Without Donor Restrictions	122,650,754	103,624,358
With donor restrictions:		
Split interest agreements	3,806,476	3,307,929
Fiscal sponsorships	2,520,289	1,715,042
Total With Donor Restrictions	6,326,765	5,022,971
TOTAL NET ASSETS	128,977,519	108,647,329
TOTAL LIABILITIES AND NET ASSETS	\$ 145,817,285	\$ 123,110,091

STATEMENT OF ACTIVITIES

as of December 31, 2021 and 2020

SUPPORT AND REVENUES	2021	2020
Contributions	\$ 7,265,894	\$ 8,421,041
Dividend and interest income	1,611,601	1,581,929
Net gain (loss) on long-term investments	19,073,758	11,264,036
Reimbursements and other	573,761	810,873
Split interest agreements	498,547	295,445
Total Support and Revenues	29,023,561	22,373,324
EXPENSES		
Grants and program services	7,327,348	7,253,616
General, administrative, and fundraising	1,366,023	1,211,978
Total Expenses	8,693,371	8,465,594
Change in Net Assets	20,330,190	13,907,730
Net Assets, January 1	108,647,329	94,739,599
Net Assets, December 31	\$ 128,977,519	\$ 108,647,329



BY THE NUMBERS

32

NEW FUNDS
IN 2021

788

TOTAL # OF FUNDS
+89 Projects and 49 CRTs

10,825

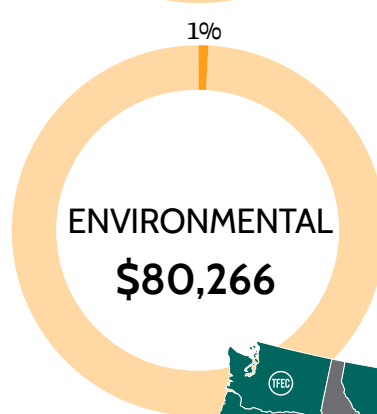
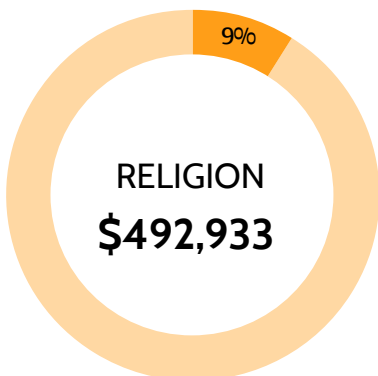
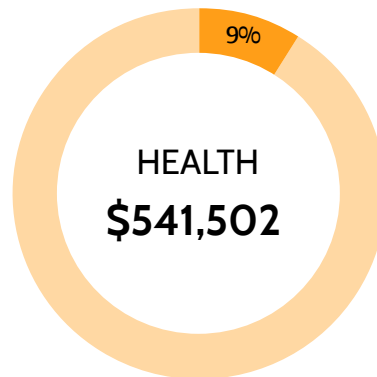
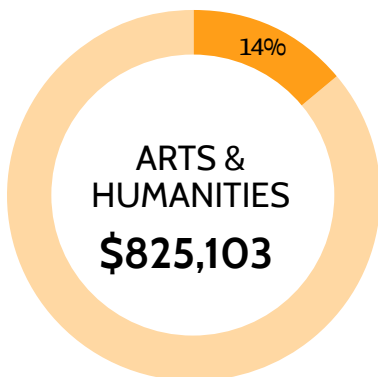
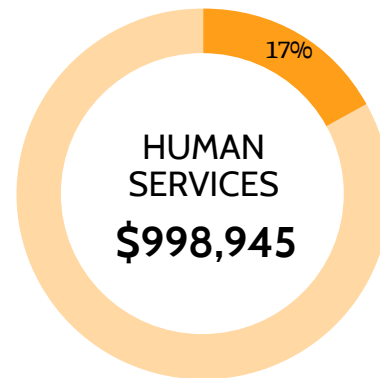
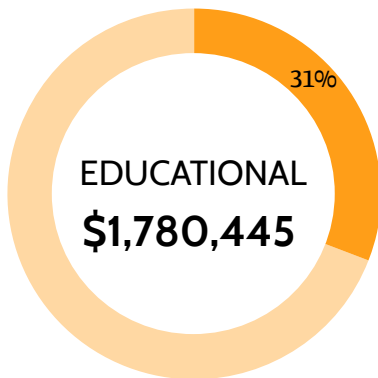
TOTAL # OF
GIFTS RECEIVED
IN 2021

TOTAL CONTRIBUTED IN 2021

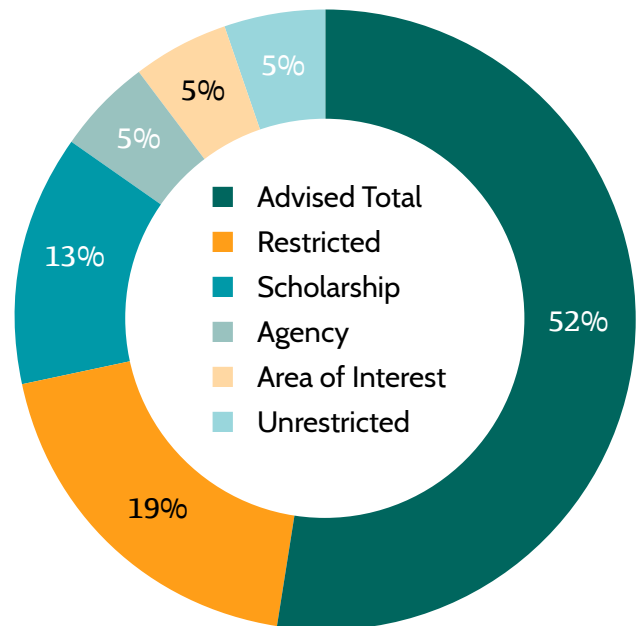
\$8,175,153

2021 Total Grants \$5,790,286

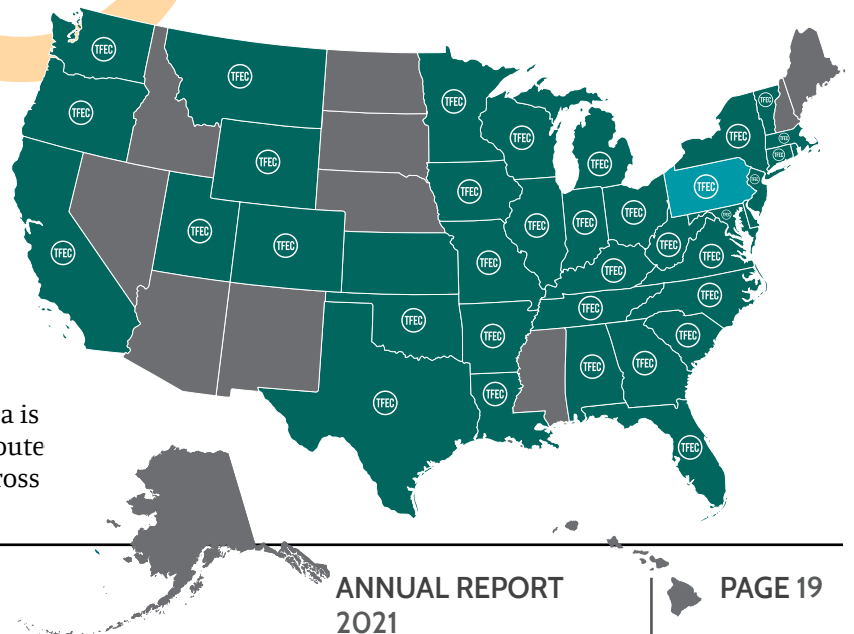
By Program Area



By Fund Type



83% of grant recipients were Pennsylvania organizations*



* Although TFEC's discretionary program service area is South Central Pennsylvania, our donors can distribute grants to any qualified charitable organization across the United States and internationally.

START YOUR CHARITABLE JOURNEY

Since 1920, The Foundation for Enhancing Communities (TFEC) has been partnering with you to establish your charitable funds. TFEC supports your dreams and creates opportunities for you to achieve your charitable goals. We are your community foundation and we will be here to sustain your philanthropic goals forever.

Ways to Give

In addition to cash, you can give other assets to establish a fund or contribute to an existing fund.

TFEC has the capacity to accept:

- marketable securities
- closely held business stock
- cryptocurrency
- real estate
- life insurance policies
- mutual fund shares
- qualified retirement plans or pensions
- nontraditional assets such as collections, art, antiques, or even a car

For more information about how we can help you achieve your philanthropic goals, please contact Janice R. Black, President & CEO, at jblack@tfec.org or Jennifer Doyle, Vice President of Philanthropy & Community Investment, at jdoyle@tfec.org. You can also visit our website at www.tfec.org, or call us at 717.236.5040

Create a **Donor or Committee Advised Fund** to support many causes that are meaningful to you. With a donor or committee advised fund, you recommend grant recipients and amounts whenever you would like; the fund may be permanent or nonpermanent.

DONOR ADVISED FUND

Eric and Amy Huck Charitable Foundation Fund

"We are pleased to start our Donor Advised Fund through TFEC. It is important to us to give back to the community that we were both raised in, and continue to make our home. Our contributions allow us to acknowledge the people and organizations that have supported us personally and professionally. We believe that philanthropic endeavors support strong foundations for the future. Thanks for the opportunity to channel our desires through a vehicle like TFEC."

Amy Huck



We can help you achieve your philanthropic goals

Create a **Restricted Fund** to support specific nonprofits that are important to you. With a restricted fund, you designate one or several nonprofit organizations as permanent grant recipients.

RESTRICTED FUND

Sara Fox Hammer Memorial Book Fund



"For over 20 years, I have been familiar with TFEC and the great work they have done for over 100 years. When I retired, I was fortunate to be able to join the Board of Directors of TFEC. As a Board member, I know it is important to not only serve on the Board but to also support the organization financially. As my commitment to TFEC, I established the Sara Fox Hammer Memorial Book Fund in honor of my grandmother."

"My grandmother taught second grade at The Pine Street Elementary School in Palmyra. One of her favorite sayings was that "The only thing no one can ever take from you is your education." In her honor, I wanted to make sure that every second-grade students at Pine Street Elementary School would be able to buy at least one book of their choosing during the Scholastic Book Fair. Knowing that this fund will be perpetual is of great importance to me. In this way, my grandmother will aid in the education of second grade students forever. TFEC and their funds truly embody its mission of Then. Now. Forever."

David Forney

RESTRICTED FUND

Dave and Linda Kutz Fund



"We established this fund through the Perry County Community Foundation as a means of providing long-term financial support to non-profit organizations in Perry County. Through our involvement with a number of these groups, and the wonderful staff and volunteers who serve each one, we have seen first-hand the important work they do for the community and we want to help them succeed in their efforts."

Dave Kutz

HELP YOUR COMMUNITY WHERE IT'S NEEDED MOST



TFEC is the community-minded partner for all your charitable needs. Do you want to make a big impact with your charitable giving, but aren't sure where to start? Consider establishing one of these funds:

An **Unrestricted Fund** supports the most current needs affecting our community, today and forever. Giving unrestricted gifts ensures funds will be available, in perpetuity, for the most current community needs.

Grant decisions are made by volunteer advisory committees and are distributed through a competitive grantmaking application process annually.

An **Area of Interest Fund** supports one specific issue that you care about. With an Area of Interest Fund, you focus your charitable interests in one specific area, such as arts, education, health & human services, environment or community development. Grant decisions are made by volunteer advisory committees and are distributed through a competitive grantmaking application process annually.



Everyone Can Give Back Through TFEC

\$10,000 over 5 years

Anyone can create a fund to leave a legacy that impacts their community forever. The minimum contribution level to start a fund is \$10,000, and which can be achieved over a 5 year period. That's \$2,000 per year over 5 years, or less than \$200 a month!

AREA OF INTEREST FUND

Charles and Elizabeth Stone Fund for Arts and Culture

"Elizabeth and I were always interested in the arts and supported various cultural initiatives in our area. We watched with considerable satisfaction as the local arts landscape grew more vibrant over the years. I hope that this fund may play a small part in the continuation of a very positive and encouraging trend."

Charles Stone





TFEC PROPERTIES, INC.

You can give a gift of real estate to meet your charitable goals



Advisory Committee

Robert C. Grubic, Chair

Daniel Alderman

Paul Bruder

Joy Daniels

J. Stephen Feinour, Esq.

Steve Hawbecker

Mark D. Hipp, Esq.

Gary L. Nalbandian

George A. Parmer

Lane Schultz

Neal S. West

In addition to cash and other assets, you can give the gift of real estate to establish your fund or contribute to an existing fund.

TFEC Properties, Inc. allows The Foundation for Enhancing Communities (TFEC) to receive, hold, manage, lease, and otherwise process real estate gifts from donors. TFEC Properties, Inc. can handle charitable gifts of real estate and can even consider accepting part sale/part gift transactions, such as real estate with a small mortgage still to be paid.

TFEC Properties, Inc. can also receive real estate in various arrangements like gift unitrusts, which address the ongoing interests and income needs of the donor during their lifetime and provides the ability to make a charitable gift now and in the future.

Additionally, TFEC Properties, Inc. can arrange for real estate and provide management of real estate for the benefit of other nonprofit organizations. Not only would this group be able to handle real estate transactions relating to the TFEC funds, but it could also be the holding entity for donations to benefit other qualified nonprofit organizations.

How it Works

We will work with you to identify which giving option best suits your charitable goals. You can make an immediate donation of real estate, or make a planned gift and leave a meaningful legacy. Your gift will be reviewed thoroughly to ensure it complies with IRS requirements.

Once approved, TFEC Properties, Inc. will accept a deed to the property and undertake the process of the sale. When the property is sold, the net proceeds will be placed in your charitable fund and invested.

Multiple Tax Benefits

A gift of real estate entitles you to receive multiple tax benefits to the extent allowed by federal and state law, including:

- A charitable income tax deduction for the fair market value of the donated property;
- The reduction or elimination of capital gains; and
- The reduction or elimination of estate taxes.

Please consult with your legal and tax advisors to evaluate your individual tax circumstances.

CORPORATE SOCIAL RESPONSIBILITY

TFEC can help your company reach its charitable goals

TFEC can help your company develop and administer a strategic corporate giving plan that makes an impact in your community, advances your corporate objectives, and supports employees' charitable efforts. Companies who choose to participate in corporate social responsibility initiatives find their employees feel more valued which, in turn, increases both job performance and morale. Your corporation's giving plan will be customized to enrich and streamline your charitable goals, and can include any of the following:

- **Strategic Design & Implementation**

TFEC can help you develop a lasting strategy that maximizes the impact of your company's giving.

- **Grantmaking Services**

TFEC can help you create or improve your corporate grantmaking program, handling administration and request for proposal solicitations for you.

- **Corporate Foundation**

TFEC can help you establish a Corporate Foundation to increase the visibility of your company's charitable strategies in the community, as well as connect your corporation to the charitable causes you care about.

- **Corporate Scholarship Fund**

TFEC can help you support worthy students entering or continuing their education by creating your company's own scholarship fund.

- **Corporate Hardship Fund**

TFEC can help you provide aid to your employees after disasters or for other hardships.



ROYER FAMILY SCHOLARSHIP FUND

Hannah and Lester Royer are the Matriarch and Patriarch of Royer's Flowers and Gifts. They both attended Elizabethtown College and studied to become teachers in the 1920s. It was very rare for a woman to attend college in that period of time, but Hannah and Lester both had a strong determination to improve themselves by becoming better educated.

Ultimately, they both became teachers. Lester taught high school biology and Hannah taught elementary grades. It wasn't until they were both in their early '50s that they decided to start selling flowers to help provide extra income. That side business soon turned into the business known today as Royer's Flowers in Central Pennsylvania and Connells Maple Lee Flowers in Columbus, Ohio.

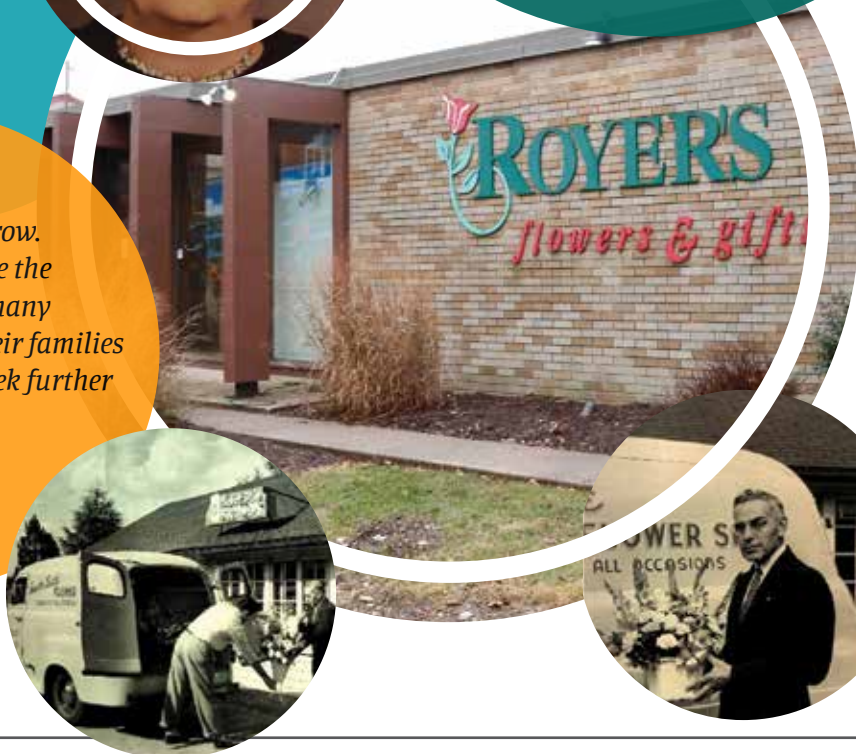
It is fitting then that the Royer Family, who still own and operate the flower businesses, have established this fund to help their employees, their children, or grandchildren gain additional education to help them succeed in life. This scholarship is available for trade, two-year, or four-year post high school continued education for full- or part-time studies.

"We wanted to continue to expand our outreach to our community and to our employees and their families. Establishing this scholarship fund now provides us with a great mechanism to help with the expense of gaining further education. Our grand parents, Mom and Pop Royer as they were called at work in the flower shop, were trained educators and taught elementary school and high school biology. Establishing this fund hopefully helps others with some of the expense of further education while honoring the legacy of our grandparents."

Tom Royer, CEO, Royer Flowers

"It is anticipated that the fund will grow. We want to help reduce the financial burden of as many of our employees and their families as possible while they seek further education."

Tom Royer, CEO,
Royer Flowers



SCHOLARSHIPS

Many students want to further their education, but don't have the means. You can help by establishing a scholarship fund.

When you create a scholarship fund, you begin by imagining who would be the ideal candidate to support and keep this student in mind while considering the details

of your scholarship. Criteria can include:

- field of study and career plans
- educational goals and personal passions
- academic performance
- extracurricular activities
- leadership
- community engagement.

You can select scholarship awardees with the assistance of a committee using your criteria or assign a committee to make the decisions. TFEC administers the award process and payment of all awards each semester. Scholarships may only be used towards the cost of tuition, fees, and/or books.

TFEC Scholarship Funds

2021/2022 Academic Year

TFEC currently manages over 150 scholarship funds that relieve some of the financial burden that higher education can place on a student and their family.

Award Recipients
330
Scholarships Awarded
\$785K+

Management Service Agreements

2021/2022 Academic Year

TFEC currently administers three scholarship funds: the Samuel L. Abrams Foundation Scholarship, the Ray S. Shoemaker Scholarship, and the Leon Lowengard Scholarship.

Award Recipients
107
Scholarships Awarded
\$650K+

Scholarship Funds
150+

Partnership for Access to Higher Education

TFEC is 1 of 43 partners with the AES/PHEAA Partnership for Access to Higher Education (PATH) Program. TFEC scholarship recipients are eligible to have their awards matched provided they attend a school in PA and have a PA grant, among other criteria. Scholarship recipient information is submitted to PHEAA by TFEC team, requiring no additional work from the scholarship recipient.

1 OF 43

PATH Program Matching Funds

\$120K+

PATH Program Maximum Match
UP TO \$3,500

NEW SCHOLARSHIP FUNDS ESTABLISHED IN 2021

Dr. Marshall H. Layton Memorial Scholarship

The Dr. Marshall H. Layton Memorial Scholarship was created in memory of Dr. Rock to support Harrisburg city students in efforts to continue their life-long love of learning.

Dr. George H. and Mrs. Hettie S. Love, "Love of Learning" Scholarship Fund

See below for a feature on this scholarship.

Mercer Vu Farms/Ron and Judy Hissong Scholarship for Agriculture Fund

The Mercer Vu Farms/Ron and Judy Hissong Scholarship for Agriculture Fund was set up in honor of Ron Hissong, a life-long dairy farmer, who along with his wife, established Mercer Vu Farms, Inc. The scholarship was setup by his wife Judy and their sons Rick and Rod to continue Ron's passion for agriculture and giving

back to his community. This scholarship is for any student who resides in the Tuscarora School District and is continuing their education in agriculture or an agricultural related field.

Ciara Meyer Memorial Scholarship Fund

This scholarship fund is in memory of Ciara "CeCe" Meyer. CeCe was a 12 year old, fun, vibrant and loving girl who attended middle school in the Susquenita School District. CeCe passed away January 11, 2016. While CeCe's death was not directly caused by domestic violence, her life was very much impacted by it. Mental illness surrounding her was the root cause. Ciara would have graduated in 2022. This memorial scholarship fund provides scholarships for students graduating from Susquenita School District.

Royer Family Scholarship Fund

See page 25 for more details on this scholarship.

THE DR. GEORGE H. AND MRS. HETTIE S. LOVE, "LOVE OF LEARNING" SCHOLARSHIP

In 2021, a long-held dream came true as the Bishop Nathan Baxter Chapter of the Union of Black Episcopalians (www.ubebbc.org/) established a scholarship to honor and continue the legacy of Dr. George H. and Mrs. Hettie S. Love. Dr. Love's career was in education, and he delighted in helping young people develop their skills and talents. Mrs. Love was the first African-American to graduate from The Wharton School at the University of Pennsylvania and continues to give her time to many nonprofit organizations.

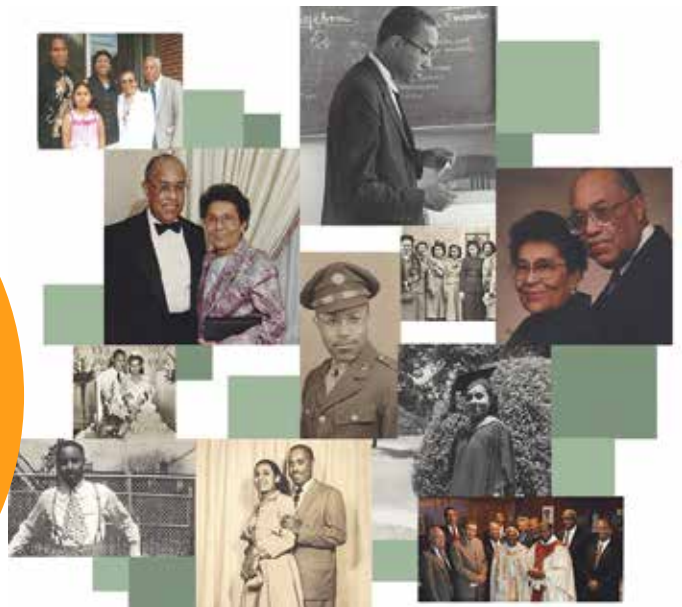
The Dr. George H. and Mrs. Hettie S. Love, "Love of Learning" Scholarship will support the next generation of educators with a special emphasis on educators who are People of Color. It was of utmost importance that this scholarship contribute to improving the educational

opportunities of future learners by providing positive role models within their classrooms. The scholarship will award high school students who, upon graduation from college, are genuinely committed to share their joy of learning with their students.

Initial efforts, including an outdoor gala supported by the community, raised over \$20,000 for the fund. Partnering with TFEC allows the scholarship to be available in perpetuity. In addition, TFEC provides the support to administer the applications, and to grow the fund. Representatives from the community will assist in the selection of the recipients.

"We are excited to award our first scholarship in 2022 and continue to raise money to reach our goal of \$100,000, which would allow us to award multiple scholarships each year. We are so grateful for those who have contributed to the success of this scholarship fund and appreciate others who might join us on this venture to share the "Love of Learning" with others."

Rev. Rebecca Myers, The Church of the Nativity and St. Stephen



LEGACY GIVING

In addition to accepting direct contributions, TFEC assists donors in making planned gifts. Often these gifts are deferred based upon personal estate planning and the income needs of the donor. Even though gifts might be deferred, the gifts could have immediate tax benefits. Deferred gifts include bequests, charitable remainder trusts, charitable annuity remainder trusts, charitable lead trusts, and real estate with retained life interest.

Donors who make a planned gift or remember TFEC in their wills are invited to become members of our 1920 Legacy Society. Members of the 1920 Legacy Society receive special recognition in our Annual Report, invitations to all TFEC events, and a special luncheon and gift to thank them for their planned gift. Thank you to these donors for their capacity for generosity, goodness, and vision.

Ways to leave a Legacy

- Make a bequest to TFEC either creating a new fund or making a donation to an existing fund
- Create a charitable trust
- Donate real estate with a retained life interest
- Gift a life insurance policy
- Gift your IRA/Pension/Retirement Plan

1920 Legacy Society

Susan Auchincloss
Sara Jane Aucker
William Banks
Janice R. Black
Harold and Dolores Brake
Dr. Maury Brenner
Dr. David Bronstein
Eric L. Brossman
Melvin Brownold
Denise and William Bucher
A. Wesley Carr Jr.
Robert and Barbara Clay
Carol DiMartile
Jane Edgar Freet
Gordon E. Fry
Arthur and Margaret Glockner
Robert and Miriam Goodling
Frieda Gover
James E. Grandon, Jr. and Jean Grandon
Lois Lehrman Grass
Kendall and Connie Hanna

Jody Heberling & Beth Helterbran
Glenn and Barbara Holliman
Martha B. Hostetter
Amy & Eric Huck
Kenneth S. Knowlton
Margaret D. Kooistra
Eric P. Krell
Robert Lau & Monte Avery
Richard and Jan LeBlanc
William Lehr, Jr. and Beverlee Lehr
Barbara Lock
Robert Lynch & Dianne Brace
George and Carrie Lyter
Jerry W. Martin and Michael E. Knaub
L. Jeffrey and Sharon Mattern
James M. and Janet M. Maynard
Harold A. McInnes
Barbara Collins Miller
Linda Miller and Rob Adelberg
Wayne and Susan Mountz
Phyllis Mowery
Kathryn S. Patterson

Charles Peters
Nancy Reist Preis
Marilyn Pukmel
David W. and Jeanne Reager
Neal and Linda Rhoads
Helga Rist
William and Susannah Rothman
Patricia E. Roussel
Diane L. Sandquist
Conrad M. and Gail Siegel
Glenda Singiser
Stephen Spector
Jennifer L. Steigelman
Gail Stephens
Larry W. & Mary Alice Stoops
Marilyn Lee Urie
Anne Ely Wain and Richard S. Wain
Gale Wenk du Pont
Wallace and Lois Willig
Samuel Worley
Linda M. Zullinger

Achieve your Charitable Goals with a Future Gift



"We have been affiliated with the Franklin County Community Foundation and its predecessor organizations since 1988, serving as Chairman for several years.

The reason for me choosing the Legacy funds, I have found TFEC has a remarkably large inventory of investment tools that can be used to gain the desires we would hope to achieve from an on-going legacy group. They can work among the investors themselves or they can act as an advisor to retain their own attorney to set up a schematic of the funds.

Since we have been involved in philanthropy we have chosen to make many of our gifts on a very local and personal basis feeling the sense that type of fulfillment generates. After shaping up our trust every few years, we find it quite easy to use whatever funds that fit into our family distributions or community bequests.

We would plan as our estate status changes to work in the legacy group as it is more applicable. We look forward to a relationship as our future develops."

Harold & Dolores Brake

Charitable Remainder Trusts

TFEC manages and serves as trustee for 49 charitable trusts, valued at \$11,760,442 (12/31/21). These trusts include Charitable Remainder Unitrusts, Charitable Remainder Annuity Trusts, and Charitable Lead Trusts. These legal agreements transfer assets irrevocably to a trust, which then invests them and creates two (split) interests. You can establish these legacy gifts in order to increase the impact of your charitable gifts, receive a lifetime income, and/or qualify for income, gift, and estate tax benefits. Charitable trusts have a minimum \$50,000 contribution requirement. In most circumstances, legal services are required and are available to you without charge through TFEC's relationship with Nauman, Smith, Shissler & Hall, LLP.

NEW FUNDS

Area of Interest Funds

Charles and Elizabeth Stone Fund for Arts and Culture

This fund was established in 2021 to support arts funding only in Cumberland, Dauphin and Perry Counties.

TFEC LGBTQ Community Fund

The TFEC Board of Directors established this fund as a permanent source of grant funds for programs and projects supporting the LGBTQ community. It is open to any donors who wish to support this field of charitable endeavor.

TFEC Animal Welfare Fund

The TFEC Board of Directors established this fund as a permanent source of grant funds for programs and projects in the area of animal welfare. It is open to any donors who wish to support this field of charitable endeavor.

TFEC Asian Pacific American Community Fund

The TFEC Board of Directors established this fund as a permanent source of grant funds for programs and projects supporting the Asian Pacific American Community. It is open to any donors who wish to support this field of charitable endeavor.

TFEC Community Development Fund

The TFEC Board of Directors established this fund as a permanent source of grant funds for programs and projects in the area of community development. It is open to any donors who wish to support this field of charitable endeavor.

Committee Advised Funds.

Gail Deimler Charitable Fund

The Gail Deimler Charitable Fund was established by Gail Deimler who cared about those less fortunate. The fund has an advisory committee which will annually make grant decisions to serve nonprofits which work with individuals in three specific area of service: serving people in need, health care and hospice service.

Forever Foundation Fund

The Forever Foundation's mission is to support innovators on the bleeding edge of decoupling opportunity from environmental degradation, scarcity, and other ecological restraints.

We care deeply about the natural world and humanity's ability to thrive in a clean and healthy environment. Our business delivers timeless jewelry without any of the environmental costs of diamond mining, and our giving expands the impact of effective nonprofits that conserve or restore the beauty and functioning of fragile ecosystems.

TFEC Student Emergency Assistance Fund

The TFEC Student Emergency Assistance Fund will provide financial assistance to meet the emergency needs of students in situations that may prevent them from persisting in their post-secondary program. The fund will make grants to eligible individuals who are current TFEC scholarship recipients for up to \$500 per application. Students may re-apply for funding up to a maximum of \$1,500.

Donor Advised Funds.

Izzy Bee Memorial Fund

Named in memory of the late Isabel 'Izzy' McEgan, the fund continues the legacy of adventure, positivity, selflessness, and community that Izzy brought to Camp Small Valley as an international teen counselor in 2019. The fund supports causes Izzy was passionate about, the life changing opportunity of international exchange and camp leadership, childhood cancer, and animal welfare. Celebrating a life that ended much too soon, this fund ensures the positive impact of Izzy's life far exceeds her short 19 years with us.

Amy and Eric Huck Charitable Foundation Fund

Established in 2021 by Amy and Eric Huck, this fund gives back to the community and supports the community in which they were raised as children.

Established in 2021

J & T Meade Humanitarian Fund

The purpose of the J & T Meade Humanitarian Fund is to show others the love of Christ by providing physical and financial relief to nonprofit organizations, widows and orphans from underdeveloped countries.

Cathy and Alan Siegel Fund

The Cathy and Alan Siegel Fund was established by these two Susquehanna Township natives who now live in Southern California to support a variety of educational and charitable endeavors around the world.

Kay R. and Murrel R. Walters Fund

As a member of the Advisory Committee of the Mechanicsburg Area Community Foundation, a regional foundation of TFEC, Murrel has participated in the careful and thoughtful distribution of discretionary grant funds annually. By establishing the Kay R. and Murrel R. Walters Fund, we are able to give to the nonprofit organizations we so value, knowing the Cumberland County community at large will be the ultimate beneficiary.

Restricted Funds.

Sara Fox Hammer Memorial Book Fund

The Sara Fox Hammer Memorial Book Fund was created to provide money for second graders in the Pine Street Elementary School in the Palmyra School District to purchase a scholastic or similar book. Every child will have the opportunity to choose their own book.

Charles and Elizabeth Stone Fund for the New Cumberland Library

Elizabeth Stone served for over thirty years on the board of the New Cumberland Public Library and as board President for a considerable time. She helped bring it into the digital age, and was a leader in the updating of the facilities and the search for the right library director. The wellbeing of the library was always at the top of her agenda. The creation of this fund is in her honor.

Charles and Elizabeth Stone Fund for Human Needs

This fund will support human needs services provided by the following nonprofits: Bethesda Mission, Salvation Army, Capital City Region, Downtown Daily Bread, and Homeland Hospice.

Libby Urie Food Bank Fund for Jewish Family Service

This fund was established by Libby Urie to support the food bank at the Jewish Family Service to support folks who need assistance with food items.

Restricted – IRA Funds.

Linda and David Kutz Charitable Fund

This Perry County Community Foundation (PCCF) fund was created to distribute funds which focus on Perry County non-profits through PCCF plus designate other groups beyond the immediate area.

Gregory and Diana Lyon-Loftus Giving Fund

This fund was established by the donors to facilitate distributions of their funds to organizations able to effectively apply them in service to their neighbors in need.

Shree GovarthanNathji Foundation Fund

The Shree GovarthanNathji Foundation Fund, an IRA Restricted Fund, was established by Yogesh and Renuka Parikh. They are charitably minded and wanted to be able to use their IRA funds to assist their favorite charities.

NEW PROJECTS in 2021

TFEC can perform many internal functions for organizations or individuals who have a charitable purpose.

Have you seen a problem in your community that you want to address? You might be thinking about starting a nonprofit organization to tackle the problem — a time consuming and expensive task. There is an easier option! TFEC can help you achieve your mission through the establishment of a Project, letting you operate as a nonprofit organization through a fiscal sponsorship agreement. This agreement allows you to access the reputation, credibility, and fiscal acumen of TFEC. Using TFEC's 501(c)(3), you can fundraise to support your charitable mission, give your donors tax-deductibility for their gifts, and create good records of fiscal activity. TFEC has expertise in managing a wide range of charitable projects, from community health initiatives, to corporate and foundation grantmaking programs, to urban beautification initiatives.

Central PA Korean Association

The charitable purpose of the Project shall be to strengthen the Korean immigrant and Korean American communities in Central Pennsylvania through connection, partnership, and fellowship.

Friends of Austin

The charitable purpose of this project shall be to find a cure for LMNA related to Congenital Muscular Dystrophy (L-CMD) a rare fatal muscle wasting disease.

We Salute Our Heroes

The charitable purpose of the project shall be to promote social welfare and combat prejudice and discrimination by hosting and supporting events honoring military veterans and their families as local heroes to thank them for the sacrifices they make and have made for us.

Pennsylvania Community Foundation Association

The charitable purpose of the Project shall be to grow the impact of community foundations in order to support and strengthen Pennsylvania communities.



Projects Strength Communities and Improve Lives

Projects Strengthen Communities and Improve Lives

The Foundation for Enhancing Communities supports the philanthropic interests of donors who want to effect change in their communities. TFEC's mission is to inspire giving by partnering with donors to achieve their charitable goals and strengthen our local communities by investing in them now and for future generations.

TFEC achieves our mission by providing numerous programs and services to the community. One of these services is our Fiscal Sponsor Program, or Projects. Fiscal sponsorship gives TFEC the ability to extend its nonprofit status to Projects so they operate under TFEC's 501(c)(3), raise tax-deductible contributions, and use those funds to achieve their mission. Projects provide a way for individuals to work together for the common good, transforming shared beliefs and hopes into action. They give shape to our boldest dreams, highest ideals, and noblest causes. They can foster civic engagement and leadership, drive economic growth, and strengthen the fabric of our communities.

As a fiscal sponsor, TFEC enables Projects to invaluable touch the residents in our local communities. These Projects provide awareness and support on a variety of community issues: mental health, addiction, domestic violence, chronic illness, historical preservation, community engagement, economic disparity, survivors of trauma, and supporting local nonprofits, to name a few.

Areas of Focus

- Health & Human Services
- Community Development
- Education
- Arts & Culture
- Environment

IN 2021, 77 PROJECTS INVESTED \$1,805,429.66 BACK INTO THE COMMUNITY.

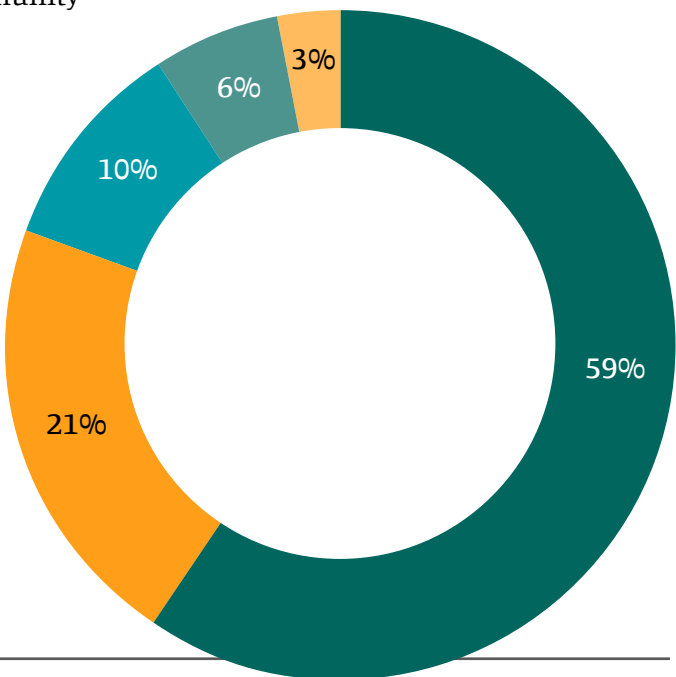
Projects Serviced, Participated In, or Supported the Following:

- COVID-19 Relief
- Supporting Local Nonprofits
- Addiction and Mental Health
- Lack of Health Care
- Hunger
- Women's Issues
- Youth Programs
- Support of Veterans
- Poverty
- Environmental Awareness
- Educational Enrichment
- Homelessness
- Historical and Community Preservation
- Domestic Violence
- Chronic Illness
- Scholarships
- Diversity and Inclusion
- Heritage Awareness

In 2021, TFEC supported 72 Projects to address and focus on neighborhood needs in the following five areas: Arts & Culture, Community Development, Education, Environment and Health & Human Services.

2021 Project Impact

Community Development	\$ 1,065,902.02
Health & Human Services	384,984.41
Arts & Culture	182,472.13
Education	113,438.56
Environment	58,632.54
	1,805,429.66



THE GIVING TREE OF HUMMELSTOWN AND HERSHEY

Project since 2008

The Giving Tree of Hummelstown and Hershey celebrated 13 years of supporting local families in crisis or transition. They have helped over 500 families in the Lower Dauphin and Derry Township school districts. The Giving Tree of Hummelstown and Hershey provide household goods, food needs assistance, clothing, educational support and other assistance to help families in need.

Since becoming TFEC's first **Project in 2008**, the volunteers of the Giving Tree of Hummelstown and Hershey have **provided over \$180,000 in support with local community needs**.

A snapshot of their community impact includes:

Fruit baskets

Fruit baskets were purchased thru local farm market vendors and delivered to Grantville, Hershey and Hummelstown Food Pantries just in time for the holidays.

Impact: Distributed 50 fruit baskets each to Hummelstown, Grantville and Hershey Food Pantries.

Winter coats for kids

Winter coats for kids — Support families in need and assist growing children to have a warm winter coat each year.

Impact: The coat drive has been very successful! Over 50 coats were distributed to Lower Dauphin School District students.

Personal Hygiene Kits

Personal Hygiene Kits to schools, Lower Dauphin Communities That Care, and Falcon Packs recipients and the Hummelstown Food Pantry.

Impact: A total of 209 kits were provided. Neighbors in need were able to pick up the kits which helped offset some of the expenses of back to school preparation.

Dental Kits

Dental Kits to local elementary school

Impact: A total of 505 kits were provided to nurses in the Lower Dauphin and Derry Township school districts. The kits contained a toothbrush, a tube of toothpaste, and a dental care booklet. Financial support was also provided for dental care to several children without dental insurance.



Gift Cards

Gift Cards were given to local families to assist with basic needs, bedding, kitchen items, school supplies, and food insecurity.

Impact: Provided basic home needs, school supplies and food assistance to families with financial distress. This included healthy choice snack packs to Lower Dauphin Falcon Pack recipients.

Donations

Donations to local agencies to support community needs.

Impact: Provided basic home needs, school supplies and food assistance to families with financial distress. This included healthy choice snack packs to Lower Dauphin Falcon Pack recipients for the summer and donations to local charity groups who help support food insecurities in their school districts.

RANDI'S HOUSE OF ANGELS

Project since 2011

Established in October 2011 by Nancy Chavez as a tribute to her daughter, Randi, who was brutally murdered by a hit man hired by her husband on January 10, 2003. Since her daughter's death, Nancy has been advocating for victims of domestic violence with the hope of creating an initiative for children who are also victims of domestic violence.

Nancy created Randi's House of Angels (RHOA), a project of The Foundation for Enhancing Communities, to fulfill her dream to help children and families who are exposed to and are victims of domestic violence. It is her lifelong journey to provide a voice to children that face domestic violence in their homes and continue to help to improve their lives.

Since becoming a Project in 2011, Randi's House of Angels have had a direct community impact by providing programs to more than 200 children and teens. Funds are raised through the annual Randi's Race: A 5K Walk/Run for Hope and Courage and A Round Fore Randi golf outing. The fundraising events have provided over \$537,000 to support their signature program, which are provided at no cost to families.

The services provided by RHOA include trauma-informed services, both individual and group therapies, that are designed to help children. Programs include:

Randi's Kidz Club

An evidence-based therapeutic group for children who have been exposed and/or victims of domestic violence. This ten-week curriculum is designed for boys and girls ages 8-13 years focuses on helping children express feelings and emotions through relaxation techniques.

Randi's Camp

A three-week, outcome-based therapeutic/recreational camp for children ages 8-13 years who have experienced or have been exposed to domestic violence.



Randi's KlubHouse

A ten-week therapeutic interactive group for children ages 5-7 years who have experienced domestic violence. The session blends emotional, art therapy, and psycho-education to children using kind, gentle and playful interactions and wellness options. It includes both the parent/guardian and child.

Randi's Teen Group

A psycho-educational support group focused on compassion, encouragement, and positive praise for teens, ages 13-17 years who have experienced domestic violence. The group provides educational, interpersonal, and fun activities for teens to help increase their self-esteem, self-concept, and confidence in their own abilities.



GREATER HARRISBURG COMMUNITY FOUNDATION

Established 1920

GRANT COMMITTEE

Beth Hancock, Chair*
Jennifer N. Baar
Esmeralda Hetrick
Philip Horn
Marlene Kanuck*
David Kutz
Susan Simms Marsh
Donna Murray
Richard D. Spiegelman

Dr. Carolyn Dumaresq, Chair
of the Board of Directors,
and Robert E. Caplan,
Vice Chair of the Board of
Directors, serve as ex officios
on all committees.

*New in 2022



2021 Total Assets

\$116,586,027

(79.99% of total TFEC assets)

2021 Total Grants

\$4,806,688

(83.01% of total TFEC grants)

A regional
foundation
serving
Cumberland,
Dauphin, Franklin,
Lebanon, and Perry
Counties, and the
Dillsburg Area



The Arts for All grant initiative of the Greater Harrisburg Community Foundation, a regional foundation of The Foundation for Enhancing Communities, is a unique funding opportunity to improve the efficiency of arts grant funding and increase the overall impact of grant funding for arts programming in our communities.

This arts focused grant opportunity brings together a collection of funds intended only to support arts & cultural organizations within our five and one half county region. Arts & Cultural programs reflect the “soul” of the community and its surroundings working to cultivate a cultural identity by setting the community apart and attracting people to its uniqueness.

Arts and cultural offerings help express a community's values and creates an elevated sense of awareness for community members and visitors. When arts and culture interweave in the fabric of a community, it helps cities attract tourists, diverse talent, brings about innovation and grows the economy.

Arts & Cultural programs enhance our community in the following ways:

1. Promote interaction in public space
2. Increase civic participation through celebrations
3. Engage youth in the community
4. Promote the power and preservation of place
5. Broaden participation in the civic agenda

In 2021, Arts for All awarded \$104,191.78 in grant funds to 27 area nonprofits.

Arts Alliance of Greater Waynesboro, Inc.	\$ 5,000
Bosler Memorial Library	4,000
Capitol Theater Center Foundation	3,000
Carlisle Arts Learning Center, Inc.	5,000
Carlisle Parks and Recreation,	500
Carlisle Borough Government	
CASA Charter School Foundation	5,000
Central Pennsylvania Friends of Jazz, Inc.	5,000
Cumberland Valley School of Music	5,000
Downtown Chambersburg, Inc.	2,751.78
Gamut Theatre Group, Inc.	5,000
Greencastle Area Youth Foundation	3,000
Gretna Theatre, Inc.	2,000
Harrisburg Gay Men's Chorus	5,000
Harrisburg Opera Association	5,000
Lebanon Valley Council of the Arts	3,840
Market Square Concerts	3,500
Ned Smith Center for Nature and Art	4,150
Nicodemus Center for Ceramic Studies, Inc.	5,000
Open Stage of Harrisburg	5,000
Pennsylvania Regional Ballet	4,000
Sankofa African American Theatre Company	5,000
St. Stephens Episcopal Cathedral	5,000
Student Author Movement	1,500
The Arc of Cumberland and Perry Counties	2,300
West Shore Symphony Orchestra, Inc.	2,350
Wilson College	2,500
World Affairs Council of Harrisburg	4,800

NED SMITH CENTER

In 2021, the Ned Smith Center was awarded \$4,150 from the Arts for All grant initiative for its Gamut Theatre Summer Academy.



Gamut Theatre brings its regionally-recognized Gamut Theatre Summer Academy (GTSA) to the Ned Smith Center for Shakespeare in the Woods 2021! Work with students who share a love of theatre and want to enhance their skills to become better actors by taking daily classes in Acting, Voice, Dance, Writing, Stage Combat, and Improvisation. GTSA teaching staff work professionally in their field and enrich the learning experience by being successful working artists. Students rehearse each day for an end of week "Informance" that will take place outdoors at the DeSoto Amphitheatre prior to Gamut's Shakespeare in the Woods performance.

GHCF UPstream

You know your community and its challenges best – GHCF UPstream seeks to empower your solutions.

This grant opportunity seeks to improve our area communities by supporting existing or new “upstream” systems, interventions, programs, or projects that attempt to create positive social change by addressing a problem at its source rather than managing its “downstream” symptoms.

GHCF UPstream is open to singular or collective nonprofit organizations whose proposals will serve the GHCF service area of Cumberland, Dauphin, Franklin, Lebanon, and/or Perry Counties and the Dillsburg Area of Northern York County. This grant opportunity is available to organizations of all sizes, budgets, and reaches and welcomes creative and strategic solutions that seek to address the source of systemic issues within the communities you serve. Applicants may seek support for any upstream program that best meets the needs of the population to be served. GHCF UPstream is additionally pleased to encourage applications that focus upon education, environment & parks, health & wellness, homelessness & hunger, mental health, seniors, and more.

In 2021, GHCF UPstream awarded \$278,391 to 52 organizations.

Bethesda Mission of Harrisburg	\$ 2,000
Big Brothers Big Sisters of the Capital Region, Inc.	6,000
Bolser Memorial Library	2,000
Boys & Girls Club of Chambersburg and Shippensburg, Inc.	5,000
Brethren Community Ministries	3,000
Brethren Housing Association	5,000
Bridge of Hope Harrisburg Area	10,000
Side by Side	5,846
Camp Hebron, Inc.	10,000
Capital Area Girls on the Run	7,000
Capital Area Therapeutic Riding Association	5,000
Capital Area Head Start, a division of Keystone Service Systems	5,000
Capital Region Literacy Council	6,000
Carlisle Arts Learning Center, Inc.	3,000
Carlisle Tool Library, Inc.	3,200
CASA Charter School Foundation	2,500
Catholic Charities of the Diocese of Harrisburg	4,600
Center for Champions of PA, Inc.	3,500
Center for Employment Opportunities	5,000
Community CARES	5,000
Cumberland Valley Animal Shelter, Inc.	5,000
Dauphin County Library System	5,000
Diaper Depot at Central	6,000
Downtown Daily Bread	3,000
Feel Your Boobies Foundation	5,000

WEST SHORE WILDLIFE CENTER

West Shore Wildlife Center cares for over 1,200 injured, sick, and orphaned wild animals each year with the goal of returning them to the wild, but is still only able to meet a small portion of the demand for their services. They also run a wildlife emergency

hotline that any PA residents and business may use to find knowledgeable help for a variety of wildlife emergencies and conflicts.



"Funds from the grant will be directly used to help us continue to expand the number of animals the West Shore Wildlife Center is able to care for by helping cover veterinary costs, increased rehabilitation costs, and full-time, professional staff. Thanks to funding from TFEC, we are now able to serve more people and more wild animals in central PA, who would otherwise have nowhere to turn, through our specialized services."

Emily Garrigan, Founder



Continued from page 38



Healthy Steps Diaper Bank	6,000
Join Hands Ministry	4,000
LEAF Project, Inc.	10,000
Lebanon Valley Volunteers in Medicine Clinic	3,000
LGBT Community Center Coalition of Central PA	4,000
Medard's House	6,000
Millerburg Ferry Boat Association	10,000
New Hope Ministries, Inc.	5,000
Open Stage of Harrisburg	4,000
Over the Rainbow Children's Advocacy Center	6,000
PennCares	4,000
Planned Parenthood Keystone	5,000
Retired Senior Volunteer Program of the Capital Region, Inc.	8,985
Sexual Assault Resource & Counseling Center of Lebanon & Schuylkill Counties	3,000
Shalom House	10,000
She's Somebody's Daughter	3,000
Summer Program for Youth	6,500
The Salvation Army, Carlisle Corps	1,160
The Salvation Army Harrisburg Capital City Region	6,000
The Salvation Army Lebanon	3,000
Tri County Opportunities Industrialization Center, Inc.	3,600
Twin Valley Players	10,000
Waynesboro Area School District	6,000
Waynesboro Community & Human Services, Inc.	7,500
Wildheart International Ministries	7,500
Westshore Wildlife Center	10,000
YWCA Carlisle & Cumberland County	2,500



MECHANICSBURG AREA COMMUNITY FOUNDATION

Established 1986

ADVISORY COMMITTEE

Myra Badorf*
Patricia Ferris#
Patti Herring, Chair
John Anthony, II#
Ivy Buchan*
Dale A. Flor#
Dr. Mark Leidy#
Kyle Miller*
Susanna Reppert
Murrel R. Walters, III, Vice Chair
Gary B. Weber
Linda Willis

Amy Bockis
Sue Erdman
Shaun Greenland
Greg Longwell*
John Petrie

Dr. Carolyn Dumaresq, Chair of the Board of Directors, and Robert E. Caplan, Vice Chair of the Board of Directors, serve as ex officios on all committees.

*New in 2022

#Term Expired in 2021

Director Emeritus

Foster M. Berkheimer
David Coover
Charles E. Shields, Sr.
(posthumously)



2021 Total Assets

\$7,798,676

(5.35% of total TFEC assets)

2021 Total Grants

\$280,533

(4.84% of total TFEC grants)

**A regional
foundation
serving the
Mechanicsburg Area**

CUMBERLAND VALLEY PRESERVATION SOCIETY OF SILVER SPRING

In 2021, the Cumberland Valley Preservation Society of Silver Spring was awarded \$6,000 from the Mechanicsburg Area Community Foundation, a regional foundation of TFEC.

Cumberland Valley Preservation Society of Silver Spring is a non-profit with the mission to preserve historic structures and history in Silver Spring Township, Cumberland County. The vision for the Junkin House relocation and restoration and its one acre final resting spot, both of which been donated by local Shaffer Trucking/Crete Carrier, were a vision first conceived over a year ago by Denny Hrzic and other concerned citizens of Silver Spring Township. The Junkin House, a stone farmhouse circa 1747, may be the oldest structure in Silver Spring Township.

Phase 1 of the multi-phased project was getting the house and property under an agreement of sale with the prior owner. Phase 2 involved subdividing the one acre parcel from its parent tract and all the associated permitting. Phase 3 has involved preparing the house for the move, which included demolishing a wood structure addition that was not historic. The current phase, Phase 4, of the project involves moving the limestone house from the edge of North Locust Point Road approximately 200 yards to its final destination.

Upon completion of the relocation and restoration, the house will open to the public as a museum and activity center. The outdoor amphitheater will also host historical & educational lectures. The project will house the Bud Gaskin historical collection and memorabilia from the Hempt Horse Farm, and it will be open to the public year-round.



In 2021, MACF awarded \$73,171 to 14 organizations through discretionary grantmaking.

Discretionary grantmaking refers to grants that are made in response to nonprofit applications for funding (i.e. competitive grantmaking) and is made possible by Unrestricted and Area of Interest funds, allowing MACF to address the Mechanicsburg Area's most pressing needs and promising opportunities as they change over time.

Big Brothers - Big Sisters of the Capital Region, Inc.	\$ 6,000
Capital Area Girls on the Run	5,000
Community CARES	4,000
Cumberland Valley Preservation Society at Silver Spring	6,000
Employment Skills Center	1,910
Gaudenzia, Inc.	3,000
Homeland Hospice	7,000
Hospice of Central Pennsylvania	7,000
Joseph T. Simpson Public Library	9,200
Junior Achievement of South Central PA, Inc.	5,000
New Hope Ministries, Inc.	7,080
PennCares	3,481
Pennsylvania Society for Biomedical Research	2,500
Susquehanna Service Dogs, a division of Keystone Service Systems	6,000





FRANKLIN COUNTY COMMUNITY FOUNDATION

Established 1987

ADVISORY COMMITTEE

Suzanne Trinh, Esq., Chair
Teresa Beckner, Vice Chair
Harold L. Brake
Abel Castro
Robert Correll
Elizabeth Denlea*
Anne Finucane
Michael Kalathas
John Rotz#
David F. Spang#
Thomas B. Steiger
Stephanie Strickler*
John Wheeler#

Dr. Carolyn Dumaresq, Chair
of the Board of Directors,
and Robert E. Caplan,
Vice Chair of the Board of
Directors, serve as ex officio
on all committees.

* New in 2022

#Term expired at end of 2021



2021 Total Assets

\$12,854,312

(8.82% of total TFEC assets)

2021 Total Grants

\$365,557

(6.31% of total TFEC grants)

**A regional
foundation
serving
Franklin County**

NICODEMUS CENTER FOR CERAMIC STUDIES, INC.

Through grant funding, Nicodemus Center for Ceramic Studies, Inc. (NCCS) was able to offer discounted classes for nearly all of 2021 to children, pre-teens, and teens in our community. Not including adult classes, NCCS was able to offer 93 classes, accommodating 110 students for the year. They offered these classes for a reduced cost of 50%-88%! This allowed them to attract families to their youth classes who could likely not have afforded them otherwise.



In 2021, FCCF awarded \$64,136 to 11 organizations through discretionary grantmaking.

Discretionary grantmaking refers to grants that are made in response to nonprofit applications for funding (i.e. competitive grantmaking) and is made possible by Unrestricted and Area of Interest funds, allowing FCCF to address Franklin County's most pressing needs and promising opportunities as they change over time.

Boys & Girls Club of Chambersburg and Shippensburg, Inc.	\$6,829.50
Children Aid Society	5,000
Cumberland Valley School of Music	6,800
Diaper Depot at Central	7,000
Employment Skills Center	4,000
Franklin County Legal Services	6,829
Franklin County Library System	4,976
Nicodemus Center for Ceramic Studies, Inc.	6,000
Pennsylvania Society for Biomedical Research	5,000
Shippensburg University Foundation	4,976
Waynesboro Community & Human Services Inc.	6,725

"Reaching out and offering opportunities to youth, specifically those in struggling socioeconomic conditions, is the foundation for education, in my opinion. Educating future adults, and providing even more access to those who struggle most to access it, will benefit our community. I can only hope to further this outreach, indefinitely, for years to come."

Jenny Snyder, Instructor



PERRY COUNTY COMMUNITY FOUNDATION

Established 1987

ADVISORY COMMITTEE

Marel King, Chair
Gwen Soult, Vice Chair
Adam P. Britcher
Suzanne Dell#
Mark Keller*
Linda C. Kutz
Harriet Magee
Mary Jane Moyer
Lane Partner#
Jennifer Wilson#

Virginia Ticehurst#
Jan Zeigler

Dr. Carolyn Dumaresq, Chair of the Board of Directors, and Robert E. Caplan, Vice Chair of the Board of Directors, serve as ex officios on all committees.

* New in 2022

#Term expired in 2021

Honorary Members

Hon. William Moore*
In appreciation to Joan Holman* for her vision and leadership in the founding of the Perry County Community Foundation.

* deceased



2021 Total Assets

\$7,675,697

(5.27% of total TFEC assets)

2021 Total Grants

\$307,093

(5.30% of total TFEC grants)

**A regional
foundation
serving
Perry County**

LEAF PROJECT INC.

Through the Cultivating Youth Leaders; Feeding Our Community project, the LEAF Project's youth interns, which include youth from Perry County, increased their impact by raising produce in Perry County and collaborating with local farms in our county and the Perry County Food Bank. The LEAF project youth, under the supervision of Barry Crumlich, Executive Chef from the Governor's Residence, produced 200 servings of freshly prepared meals, 330 servings of fresh vegetables like salad greens, beets, and kale, and preserved 130 jars of produce from Perry County all while learning about leadership, kitchen skills, entrepreneurship, and work ethic.

In 2021, PCCF awarded \$22,818 to 11 organizations through discretionary grantmaking.

Discretionary grantmaking refers to grants that are made in response to nonprofit applications for funding (i.e. competitive grantmaking) and is made possible by Unrestricted and Area of Interest funds, allowing PCCF to address Perry County's most pressing needs and promising opportunities as they change over time.

"We are so thankful to TFEC and the Perry County Community Foundation for making this all possible!"

Shane Kaplan, Director of Learning

Capital Area Girls on the Run	\$ 1,870
Center For Advanced School Teaching and Learning	2,000
CONTACT Helpline	2,000
Duncannon Senior Center	1,824
Employment Skills Center	2,000
Heartbeat Community Services	624
Join Hands Ministry	2,000
LEAF Project Inc.	2,000
Retired Senior Volunteer Program of the Capital Region	2,500
Ronald McDonald House Charities of Central Pennsylvania	3,500
The David and Libby Rosen Center for Healthy Families	2,500



DILLSBURG AREA COMMUNITY FOUNDATION

Established 2004



2021 Total Assets

\$828,020

(0.57% of total TFEC assets)

2021 Total Grants

\$30,415

(0.53% of total TFEC grants)

**A regional
foundation
serving the
Dillsburg Area**

DILLS TAVERN

The Northern York County Historical and Preservation Society (NYCHAPS) is headquartered in Dillsburg and has spent the last 38 years collecting, recording and sharing the history of the northernmost corner of York County. Its educational and living history programs have resonated with visitors from all over the Mid-Atlantic Region.

Part of the attraction of the Society's events can be attributed to the historical significance of the Dills Tavern site, a property that dates to 1742 and features the Dills Tavern (1794) and several 18th century buildings that have been moved to the site and reconstructed. The tavern building has been listed on the National Register of Historic Places and the outbuildings all represent important aspects of Colonial and Early Republic life.

None of this reconstruction would have been possible without the philanthropic vision of Charles Vogelsong, a local businessman and entrepreneur who understood the value of these historic structures.

With his assistance, the Society acquired the site in 2001 and began a 22 year labor of love in the total rehabilitation of the site. Charlie's wife, Lucille, continued her husband's support upon his death in 2012. With Lucille's passing in 2020, the Vogelsong estate chose to establish an endowment through Dillsburg Area Regional Foundation, a regional foundation of TFEC, that would help the Society continue the Vogelsong dream.

The Lucille C. Vogelsong Fund continues the legacy of protecting, preserving and promoting the Dills Tavern property. The annual disbursement allows the Society to schedule important maintenance and building projects that will ensure the Tavern's continued use as a historical showcase.

Scheduled maintenance in 2021 included the repair and repainting of the exterior woodwork and windows, repairing and repainting the fencing, and repairing and repainting portions of the exterior porch and stairs. These improvements to the Tavern's appearance and the preservation of the building's 228 year old woodwork will ensure its survival.

"Dillsburg and the surrounding communities recognize the Dills Tavern as a centerpiece of the area's cultural and historical heritage. With the assistance of the Lucille C. Vogelsong Fund, NYCHAPS will continue to offer a wealth of living history programs and community based events such as the Dillsburg Farmer's Market, Agriculture Day, the Dills Celtic Festival, the annual History Camp for grades 3 and 4, and many other offerings."

Doug Riley,
NYCHAPS Vice
President



The mission of TFEC's Early Education Initiative is to cultivate, convene, and strengthen community opportunities for growth, safety, and wellness for all children, now and for future generations. TFEC's Early Education Initiative believes that:



EARLY EDUCATION INITIATIVE

- Children are at the center of the communities we serve.
- Investing in resources that support children strengthens our area communities for everyone.
- Working together to build empowered, resilient, and collaborative communities in which children can live, learn, and grow is essential to the success and health of our region.

TFEC's Early Education Advisory Committee has established three areas of need in alignment with TFEC's Strategic Plan: school readiness, workforce development, and creating a trauma-informed community.

School Readiness

Through our commitment to School Readiness, TFEC's Early Education Initiative seeks to empower caregivers, connect educators, and deepen resources that help children enter school ready to learn.

Workforce Development

Through our commitment to Workforce Development, TFEC's Early Education Initiative seeks to fuel cross-sector collaborations that recognize access to early learning as crucial to the well-being of employees, children, and the development of a future ready workforce.

Creating a Trauma-Informed Community

Through our commitment to creating a Trauma-Informed Community, TFEC's Early Education Initiative seeks to foster trauma-informed education, practices, and resiliency resources that impact a child's ability to grow up happy, healthy, and safe.

Early Education Assistance Fund \$22,500

TFEC offered early education assistance for families in Dauphin, Cumberland, Perry, Franklin, Lebanon and Northern York counties through its Early Education Assistance Fund. The Fund provides opportunities to eligible Pre-K students ages 3 to 5 years old to attend a quality early learning center or preschool program located in TFEC's service area.

TFEC awarded \$22,500 to 10 students. The number of applications received was again less than previous years due to the lack of available care resulting from staffing issues within programs and parent's ability to work from home.

Early Learning Conference: 180 school district administrators, teachers, child care providers, students, and community members attended virtually in 2021

TFEC has been offering continuing education forums and conferences surrounding early education in Dauphin County since 2012, and expanded to the entire service area in 2019 in conjunction with IU-13, the United Way of Carlisle and Cumberland County and two area school districts. In an effort to assist in the state's efforts to recruit young people into the field, in 2021, TFEC invited high school and college students to attend the annual Early Learning Conference for free. Forty students attended.



Town Hall Meetings

The goal of the town hall meeting series is to bring school district teachers and administrators, child care providers, preschool teachers, and community organizations together to discuss current Early Education topics and needs facing our region during COVID-19. Each meeting consists of updates from the Office of Child Development and Education, the PA Key, and local child care programs. The following topics were discussed:

- Office of Child Development and Early Learning listening session: In preparation for developing Pennsylvania's next plan, OCDEL recorded stakeholder input around what is working, what is challenging and what child care providers think should be Pennsylvania's priorities for Child Care Works (CCW) moving forward.
- The Governor's 2021 Budget as it applies to Early Education.
- Summer Camps in 2021.
- Staffing crisis in child care centers, the American Rescue Plan Act (ARPA) Stabilization Grants, and an update on health recommendations for schools.



Early Education Advisory Committee Members

Carolyn Dumaresq, Chair

Immaculata University

Kathleen Bentley

Perry County Literacy Council

Eric Bostick

Capital Area Intermediate Unit

Karen Grimm-Thomas

Office of Child Development and
Early Learning

Brenda Hanthorn

Lancaster-Lebanon Intermediate Unit 13

Shawnee Hooper

Capital Area Head Start

Kimberly Istvan

United Way of the Capital Region

Hannah Killian

Dauphin County Library System

Nichole Lehr

Hamilton Health Center

Andrea Lown

Lancaster-Lebanon Intermediate Unit 13

Lynda Morris

Capital Region Partnership for Career Development

Eric Nemzek

Waynesboro Area School District

Karen Quinn

United Way of Carlisle &
Cumberland County

Amy Reed

Cumberland/Perry MH/IDD
Program

Christy Renjilian

Child Care Consultants, Inc.

Annette Searfoss

First Start Partnerships for
Children and Families

Brittney Watson

Shippensburg Head Start

Tamara Willis

Susquehanna Township School District

TFEC Team

Janice R. Black

Leslie Fick

Jeanne Predmore



EMERGING PHILANTHROPISTS PROGRAM

Engaging Harrisburg's next generation of philanthropists

The Emerging Philanthropists Program (EPP) provides resources and educational opportunities for Harrisburg's developing leaders who wish to be actively engaged in giving back to their community. Since its inception in 2014, 91 individuals have completed and graduated from the EPP Program.

Due to the challenges and complications of COVID-19 through the year, the EPP class was paused for 2021. The Class of 2022 resumed virtually in February with 15 members, and hopes to conduct in-person meetings later in the year.

Topics Covered

- Community needs and Nonprofit organizations
- Personal and collective philanthropy
- Fundraising 101
- Getting involved and giving back to your community

The culminating experience of the class is to practice everything learned in class by creating a grant opportunity to charitable organization in the community. After assessing the community needs, the class works together to choose a focus for the \$5,000 grant they will give, publicize the competitive application process, and then choose a nonprofit organization whose program best meets the grant criteria and shows promise of impacting the area of need. To date, the Emerging Philanthropist Program has granted \$35,000 to local nonprofit organizations.



Emerging Philanthropists Fund

The Emerging Philanthropists Fund is an endowment fund that was created in 2014 by the inaugural class of EPP. This fund is supported by Harrisburg Hoopla as well as through small fundraisers and personal contributions throughout the year. The committee is comprised of past EPP class graduates who commit to serving for three years as a volunteer member raising money, increasing awareness, and granting money from the fund. The Emerging Philanthropist Fund began making competitive grants through annual requests for proposals in 2019. In 2021, a \$2,000 grant was awarded to the Penn State Holy Spirit

Medical Outreach Clinic at Christ Lutheran Church in Harrisburg. The grant funds will be used to purchase blood pressure kits, thermometers, vaporizers, and other medical tools for clients to use at home to monitor and maintain their health status. Clients who have been afraid to venture out due to the COVID-19 infection rate will greatly benefit by owning items they normally would come to the clinic to use. Empowering clients to proactively monitor and manage their chronic health issues at home allows them to take preventative measures and intervene before a health situation escalates to a medical emergency.

Harrisburg Hoopla

Planning continues for the 4th annual Harrisburg Hoopla. The highly dedicated planning committee has been resolute and persistent in pushing forward with this amazing fundraiser through a second year of cancellations caused by the pandemic and unusual weather. The fundraiser, which takes place on Harrisburg's City Island, is an in-person adult track and field day competition to raise funds for local nonprofit organizations. Unfortunately, the event planned for October 2021 was cancelled due to rising COVID-19 infection rates and incredibly wet weather that made the playing fields unusable. Undeterred, both the planning committee and the great organizations sponsoring the event postponed Hoopla to June 4, 2022. Mark your calendars to participate in this one-of-a-kind fundraiser supporting your favorite local nonprofit!



Annually, the revenue from Harrisburg Hoopla is divided among nonprofit organizations and the Emerging Philanthropists Fund at TFEC. The nonprofit organization represented by the winning team receives 30% of the revenue, second place receives 20%, and third place receives 10%. The remaining 40% is invested in the Emerging Philanthropists Fund, which is used to give grants each year directed by the fund's advisory committee.

HEALTH MINISTRIES OF CHRIST LUTHERAN CHURCH

The Health Ministries of Christ Lutheran Church, located in the South Allison neighborhood of Harrisburg, battles the area's high poverty rate, unemployment, and/or uninsured rates. They also work to raise the lowest educational attainment rates among residents in Dauphin County, as noted in a 2019 Community Health Needs Assessment. In the last year, the clinic has seen approximately 1,500 clients for hypertension and an additional 100 for asthma. Because of the generous support from mission partners in the community and local congregations, the health clinics have been able to sustain operations throughout the pandemic and the doors have never closed.

Members of the Emerging Philanthropists Fund Advisory Committee presenting a check to Ms. Vanessa Garcia, Director of Medical Outreach for the Penn State Holy Spirit Medical Outreach Clinic at Christ Lutheran Church. From left to right they are: Kimberly Pottinger, Vanessa Garcia, Jenna Reitz, Devin Langan.





THE FUND FOR WOMEN & GIRLS

Changing the lives of women and girls

**Your gift to The Fund for
Women & Girls makes a
lasting impact.**

**Current Endowment
\$690,000+**

includes all donations and pledges

Help build the endowment fund
to \$1 million and create
approximately \$50,000 in annual
community grants, for good, forever.
Join the Dream Team today!

Join our Dream Team

The Dream Team was established in 2011 with a goal and purpose of encouraging 1,000 individuals to make a gift of at least \$1,000 to create a permanent \$1 million endowment. A \$1 million endowment will enable The Fund for Women and Girls to enhance the lives of women and girls in Central PA now and in the future. You can help The Fund for Women and Girls reach their goal by joining the Dream Team with a minimum gift of \$1,000. This can be paid outright or customized as a pledge over a period of time, up to five years. Combined with more than 260 other members, your donation builds the endowment and delivers a lasting gift to the community for good, forever. Join the Dream Team today!

Dream - \$1,000

Create - \$2,500

Sustain - \$5,000

Inspire - \$10,000

Legacy — a gift in your will or estate plan

2022 Advisory Committee

Todd Snovel, Chair
Miriam DeFehr, Vice Chair
Holly Evans
Teri Jakob
Joelle Shea
Melanie Stine
Sherry Ulsh
Betsy Hancock
Abby Fortino

Our thanks to Kelly Light, our chair for the past three years. We truly appreciate her dedication and leadership to The Fund for Women & Girls.

Working together, the Advisory Committee plus three subcommittees collaborate to achieve the goals and objectives of the Fund: Grant Making, Marketing & Events, and Women in Philanthropy.

The Fund for Women & Girls Awards

The Karen Snider Women in Philanthropy Award is given to individuals who are outstanding contributors of their time and talents to benefit the lives of women and girls in our region. With this award, The Fund for Women and Girls seeks to honor local philanthropists who selflessly serve so others can thrive.

The Rising Philanthropist Award honors young women, between the ages of 21-35, who work to impact local organizations serving women and girls, and who have distinguished themselves as leaders in the South-Central PA community.

Who do you know who generously gives their time, talents, and income for the benefit of women and girls in our region? Nominate them for one of these prestigious awards.

The Fund for Women's Girls granted \$45,000 to the following 14 nonprofits in 2021:

Bethesda Mission | \$2,000

Women and Children's Shelter Programs

The Bethesda Mission is expanding their Women and Children's Shelter Programs, and with support from the Fund for Women & Girls, they will be able to offer their residents additional recovery programs in their newly expanded shelter.

Big Brothers Big Sisters of the Capital Region | \$1,500

Savvy Sisters 2022

Savvy Sisters introduces Little Sisters (mentees) ages 12 through 15 and their Big Sister (mentors) to other women in the local community who are vanguards in their career fields, with an emphasis on women in STEAM professions. With aid from the Fund for Women & Girls, educational and experiential programs will be used to encourage young girls to pursue their educational goals and reach their full potential.

Brethren Housing Association | \$5,000

Preventing Homelessness for Single Women in Dauphin County

With funding from the Fund for Women & Girls, Brethren Housing Association will be able to provide collaborative case management services to help graduates of their Transitions program find stable employment, housing, and childcare.

Community CARES | \$4,700

Family Emergency Shelter

Community CARES provides an emergency for those who are escaping domestic violence, and for anyone who is living in impoverished circumstances, oftentimes in a car, on the streets, or in other places not intended for human habitation. Support from the Fund for Women and Girls ensures the emergency shelter will have 24/7 support for these individuals.

Community Check Up Center of South Harrisburg | \$2,500

Providing Long Acting Reversible Contraception (LARC) for Uninsured Women

Providing the Long Acting Reversible Contraception to all uninsured women is key to giving them the opportunity to choose when they make the decision to start a family. Support from the Fund for Women & Girls funds will provide the LARCs to women living in Dauphin, Cumberland, Lebanon, and York counties.

Domestic Violence Intervention of Lebanon County | \$3,500

Developing a Better Advocacy Tool Chest to Empower Survivors

The Domestic Violence Intervention (DVI) of Lebanon County gives survivors of domestic violence tools to be successful in life. Funding from the Fund for Women & Girls will be used to support additional training for victim advocates at DVI.

Employment Skills Center | \$2,000

ASPIRE Plus Continuation – Empowering Women and Girls through Education and Training

ASPIRE Plus Training offered through the Employment Skills Center provides trainings, workshops, and certificate programs to women and girls age 13-17 or older that will set them on paths to success in their lives and careers. Grant funds from the Fund for Women & Girls will be used to continue this successful program in 2022.

Family Promise of Harrisburg Capital Region | \$4,000

Interfaith Hospitality Network

Grants funds awarded to Family Promise will be used to help shelter and care for families experiencing homelessness. Specifically to address their basic needs to help them work toward self-sufficiency.

Feel Your Boobies Foundation | \$4,500

2022 Feel Your Boobies® Breast Health Education Program

The Feel Your Boobies Foundation education programming focuses on targeting women under 40 in Central PA with a life-saving call to action - "feel your boobies." The support from the Fund for Women & Girls will fund this education program in 2022.



Girls on the Run of Lancaster | \$2,000

Increasing Diversity and Breaking Barriers to Participation for Girls in Lebanon & Lancaster County program

Girls on the run of Lancaster provides after-school programming for girls in 3rd through 8th grade and inspires girls to be joyful, healthy, kind, and confident. With support from the Fund for Women & Girls, their programming can continue to be offered to girls in both Lebanon and Lancaster County.

Healthy Steps Diaper Bank | \$2,500

The Silent Crisis

Diapers and period supplies improve the health and safety of families in our community and encourage opportunities for economic self-sufficiency. Funding from the Fund for Women & Girls will purchase and distribute diapers and period products to low-income families.

She's Somebody's Daughter | \$2,000

Advanced Dental Services for Women Impacted by the Sex Industry, Exploitation and Trafficking

She's Somebody's Daughter ministers to many women who are either entrenched in the sex industry or have gotten out of it. Grant funds will be used to provide advanced dental services to women who have been impacted by the sex industry, exploitation, and trafficking.

Shippensburg University Foundation | \$3,800

SU Pride Center - Ship Cuts for Women, Femmes, and Nonbinary People

Hair care is not a small need. Self-image, which includes grooming and hair care, is important for students to feel their best and perform at their highest level. Grant funds will be used to bring a stylist from a salon who would be able to provide haircuts and styles for Black women, femmes, and nonbinary people.



COUNCIL ON FOUNDATIONS NATIONAL STANDARDS

The Foundation for Enhancing Communities (TFEC) is accredited with the National Standards for U.S. Community Foundations™—the highest standards for philanthropic excellence.

TFEC works to support the causes our region cares about, from supporting the arts and cultivating gardens, to curing illness, expanding literacy, and feeding children. National Standards says that TFEC meets the most rigorous standards in philanthropy and is a promise to the community that TFEC will continue to do this good work, right here in the South Central PA counties of Cumberland, Dauphin, Franklin, Lebanon, and Perry, and the Dillsburg Area.

National Standards is not mandatory. TFEC chose to go above and beyond by affirming our commitment to excellence and accountability. This accreditation provides assurance that we have sound policies and practices in place. In short, it means we meet the highest standards for local giving.

To receive accreditation with the National Standards, TFEC submitted internal policies and procedures to a rigorous review of 26 National Standards, plus three legal sections, in six key areas of community foundation operations, including donor services, investment management, grantmaking, and administration.

The National Standards for U.S. Community Foundations™ program was established in 2000 in cooperation with the Council on Foundations. For more information about National Standards, visit www.cfstandards.org.



Excellence. Accountability. Impact.™

NONPROFIT SERVICES

TFEC offers foundations and nonprofit organizations several options to achieve their mission today and in the future. Additionally, TFEC provides expertise to nonprofit organizations to help make smart, safe, and secure financial decisions to achieve their strategic goals.

Management Services

Overseeing a nonprofit organization or private foundation can mean being pulled in multiple directions. Through a Management Service Agreement with TFEC, your organization can divest itself of time-consuming tasks and focus on what you love: achieving your mission. Through this contractual relationship, a personalized package including options from accounting services to investment management is created, providing efficient financial administration and freeing you and your organization to focus on mission-related activities. TFEC currently administers 16 management services agreements with assets totaling \$55.6 million (12/31/21).

Current Management Services

Americans for the Arts Foundation
CASA Charter School Foundation
Center for Dairy Excellence Foundation
Central Pennsylvania Food Bank
Harrisburg Academy Foundation
Hersha H. and Hasu P. Shah Family Foundation
Hindu American Religious Institute Foundation
Leadership Harrisburg Area
Lion Foundation
Lowengard Foundation
Mt. Olivet Cemetery
Pine Street Presbyterian Church
Samuel L. Abrams Foundation
Shoemaker Foundation
St. Stephen's Episcopal School
United Cerebral Palsy Foundation Central PA

Benefits of Management Services

- Services tailored to your organizations' needs
- Cost effective
- Relief of transactional burden
- Allows for time to focus on your mission

Agency Funds

An Agency Fund is an endowment fund established by a nonprofit organization with the goal of creating a permanent source of funding for your organization. You can depend on this yearly income as either a new funding stream for your organization or a way to continue to grow your endowment by reinvesting it back into your agency fund. Income from your Agency Fund lessens the pressure to raise current operating dollars and helps to smooth the ups and downs of economic business cycles. Endowment funds also send a positive message to your donors: Your nonprofit organization has achieved a key measure of financial stability and intends to carry out its mission for generations to come.

Agency Fund Stats

150 Funds

supporting different nonprofit organizations making a difference in our region.

\$288,175

was granted from Agency Funds to the organization they support in 2021.

Types of missions Agency Funds are supporting:

- Arts & Culture
- Health & Welfare
- Education
- Religion
- Animal Welfare
- Environmental Services
- Human Services
- And many more

In 2020 and 2021, due to COVID-19, TFEC offered nonprofit organizations with Agency Funds the ability to receive their annual distribution at any point during the year. Typically, distributions are made at the same time each year; but this flexibility allowed nonprofit organizations to receive the income when they needed it most.

Benefits of Agency Endowment Funds

- Prudent investment management
- Major and planned giving expertise
- Free access to counsel
- Gift acknowledgement

2022 Board of Directors



Dr. Carolyn Dumaesq
Chair, Retired Educator



Robert E. Caplan, CFA,
*Vice Chair,
River Wealth Advisors*



L. Renee Lieux, Esq.
*Secretary, McNees
Wallace & Nurick, LLC*



Susan Simms Marsh
*Assistant Secretary,
PA American Water*



Greg D. Klopp
*Treasurer, Hershey
Entertainment & Resorts*



David Manbeck, CPA
*Assistant Treasurer, Boyer
& Ritter, LLC*



Judy Blust
Retired Educator



David G. Forney
Community Volunteer



Robert Grubic
*Herbert, Rowland &
Grubic, Inc.*



Betsy Hancock
Community Volunteer



Esmeralda Y. Hetrick
Community Volunteer



Marlene Kanuck
Community Volunteer



Dave Kutz
Community Volunteer



Amanda Owens
Capital Blue Cross



Samir Parikh
Morgan Stanley



Todd Snovel
*Pennsylvania College of
Art and Design*



Richard D. Spiegelman
Community Volunteer



**Spencer G.
Nauman, Jr. Esq.**
TFEC General Counsel

2022 Standing Committees

Audit Committee

David J. Manbeck, Principal, CPA, Chair
Michael R. Gillespie
Glenn P. Heisey
Steven M. Hoffman
William Lehr, Jr.
**Kirk Demyan*

Diversity, Equity, Inclusion Committee

Todd Snovel, Chair
Marlene Kanuck
**Janice Black*

Finance and Administration Committee

Greg D. Klopp, Chair
Dorothea Aronson
Mike Gillespie
Steve Hoffman
Richard Spiegelman
**Kirk Demyan*

Governance Committee

Susan Simms Marsh, Chair
Velma Redmond, Esq.
Jonathan Vipond, III, Esq.
**Janice Black*

Grantmaking Committee

Betsy Hancock, Chair
Richard D. Spiegelman
Jennifer N. Baar
Esmeralda Hetrick
Phillip Horn
Marlene Kanuck
David Kutz
Susan Simms Marsh
Donna Murray
**Caitlin Cluck*

Human Resource Committee

Dr. Carolyn Dumaresq, Chair
Robert E. Caplan, CFA
David Kutz
**Janice Black*

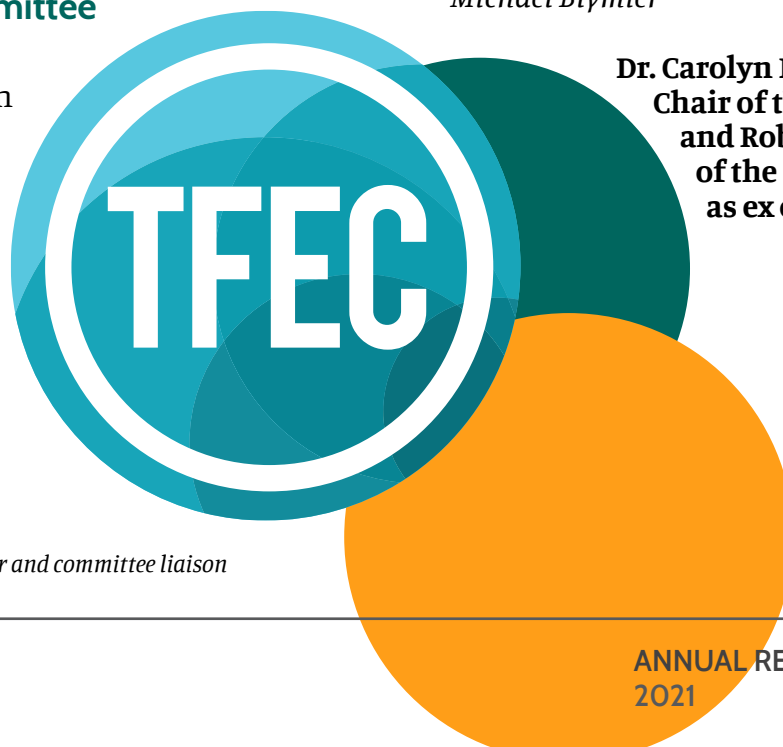
Investment Advisory Committee

Robert E. Caplan, MBA, CFA, Chair
Jennifer Collins, CFP
Frederick D. Fischer
William Lehr, Jr.
Samir S. Parikh
Conrad M. Siegel, FSA
Richard D. Spiegelman
Jonathan Vipond, III, Esq.
Catherine Azeles, CFP
**Kirk Demyan*

Marketing and Communications Committee

Dr. Jeffrey Ritchie, Ph.D., Chair
David G. Forney
Emily Grun
Tiffanie McKinnon
Amanda Owens
Coiln Powell
Alexandra Rhodes
**Michael Blymier*

**Dr. Carolyn Dumaresq,
Chair of the Board of Directors,
and Robert E. Caplan, Vice Chair
of the Board of Directors, serve
as ex officio on all committees.**



** signify the TFEC team member and committee liaison*

2022 TFEC Team



Janice R. Black
President & CEO



Kirk C. Demyan
*Vice President & Chief
Financial Officer*



Jennifer Doyle
*Vice President of
Philanthropy &
Community Investment*



Sharon Bass
*Financial
Services Associate*



Jennifer Black
Administrative Assistant



Michael Blymier
*Marketing & Communica-
tions Officer*



Dawn B. Brotherton
Philanthropic Officer



Raeann Buskey
*Marketing &
Communications
Associate*



Caitlin Cluck
*Program Officer for
Community Investment*



Faith Elmes
Scholarship Coordinator



Leslie Fick
*Early Education
Specialist*



Yamit Friedma
*Community Investment
Associate*



Debbie Garrison
Philanthropic Officer



Erin Gilbert
Donor Services Associate



Ash Morley
Scholarship Associate



Jeanne Predmore
Early Education Specialist



Tameka D. Rice
Financial

Consultants

Lucca AM, Website Support

Robert E. Caplan, CEO, River Wealth Advisors

Maher Duessel, Auditor

Brian Hess, The ENVISION Group, Inc., Print Support

IntermixIT, IT Support

MERIT, Marketing Support

Jason Minick, Minick Photography, Photographer

Spencer G. Nauman, Jr., Esq., Nauman, Smith, Shissler & Hall, LLP,
General Counsel

Conrad Siegel, Conrad Siegel, Consulting Actuary and Founder



TEAM FUND

The TFEC Team Fund was established to permit TFEC team members to engage with the community through their own grantmaking program and the opportunity to support the fund financially if they choose. This fund also allows team members to serve as a grants committee annually to give out the available funds to nonprofit organizations in the region.

Each year, all TFEC team members are invited to nominate a nonprofit organization or program/project of a nonprofit organization that is important to them by filling out a grant application. Requests can be made for up to \$4,000, and the work being supported by the TFEC Team Fund must take place in Cumberland, Dauphin, Franklin, Lebanon, or Perry County, or the Dillsburg Area of northern York County. Once all applications are received, a small group of TFEC team members review them and select the three strongest applications for the rest of the team to review. Decisions are then made by the full team as to which applications should receive funding.

Started with a gift by TFEC, the fund is otherwise supported by TFEC team members.

Since 2019, the TFEC Team Fund has granted \$17,000 to nonprofit organizations, and has donated \$20,000 to the COVID-19 Community Response Fund.

Nonprofit Organizations Supported by the TFEC Team Fund

2019

Capital Area Therapeutic Riding Association (CATRA)

Community Check-Up Center of South Harrisburg, Inc.

Lancaster Cleft Palate Clinic

2020

Hospice of

Central Pennsylvania

Vickie's Angel Walk, Inc.

Leadership Harrisburg Area

2021

AMiracle4sure

YWCA Greater Harrisburg

Shriners Hospitals for Children

TFEC TEAM ANNIVERSARIES

TFEC is honored to announce the following team anniversaries celebrated in 2021

January

Raeann Buskey — 1 year
Leslie Fick — 6 years

February

Faith Elmes — 5 years

May

Kirk Demyan — 20 years

July

Jeanne Predmore — 10 years
Debbie Garrison — 3 years

August

Jennifer Doyle — 13 years

September

Janice Black — 27 years

October

Jennifer Black — 1 year

December

Michael Blymier — 1 year





**THE FOUNDATION
FOR ENHANCING
COMMUNITIES**

200 N. 3rd Street, 8th Floor, Harrisburg, PA 17101
717.236.5040 | info@tfec.org | www.tfec.org

