



The Insider

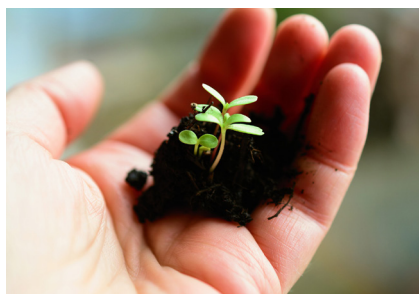
THE NEWSLETTER FOR FRIENDS OF
THE FOUNDATION FOR ENHANCING COMMUNITIES

THE GIFT OF PHILANTHROPY

When considering the legacy you will leave for your children and grandchildren, think outside the box. Aside from important tokens like photographs, what do you want to give to them? Consider the gift of philanthropy! Teaching your loved ones about the importance of giving back to the community is a seed that can be planted early in their lives.

Giving together through your donor advised fund or committee advised fund at TFEC is easy. Tax-deductible gifts can be made online or by check, and grants can be sent to your favorite nonprofit organizations at any time. Make decisions together about where your grants should go. You can keep your legacy alive by appointing up to two successor advisors or more to your fund, allowing the impact of your generosity to be felt for years to come. Plant the seed and teach your children or grandchildren about the power of philanthropy. As they continue your legacy, you can watch that seed blossom and grow.

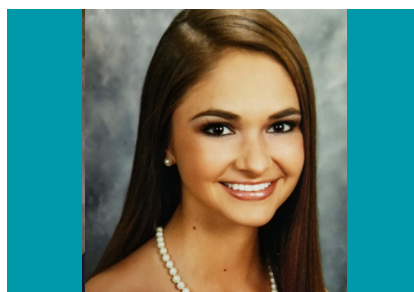
If you are interested in learning more about establishing a donor advised fund, contact Janice Black, President & CEO, at jblack@tfec.org or 717.236.5040.



PLANNING FOR THE FUTURE

Are you ready to start an Agency Fund?

Page 4



FEATURED SCHOLARSHIP RECIPIENT

Tylyn Cupp,
University of
Pittsburgh

Page 5



MORE THAN \$100,000 GRANTED TO AREA NONPROFITS

36 local organizations received funding

Page 7



HARRISBURG HOOPLA RAISES \$15,000

21 Teams competed on June 1

Page 10

QUARTERLY UPDATE FROM THE Investment Advisory Committee



COMMITTEE MEMBERS

Robert J. Dolan, ASA, Chair
Conrad Siegel Actuaries

Robert E. Caplan, CFA
River Wealth Advisors

Frederick D. Fischer
Fischer Financial Services, Inc.

Howard Hamann
Hershey Corporation (Retired)

Kenneth E. Lehman
Lehman Volvo (Retired)

William Lehr, Jr.
Capital BlueCross (Retired)

Sonya Ranker, CFP, CDFP
Questmont Strategic Wealth Advisors

Conrad M. Siegel, FSA
Conrad Siegel Actuaries

Richard D. Spiegelman
Community Volunteer

Jonathan Vipond, III, Esq.
Buchanan, Ingersoll & Rooney

MEETING DATES

January 15, 2019
April 16, 2019
July 16, 2019
October 15, 2019

All meetings take place at TFEC's offices located at 200 N. 3rd Street, 8th Floor, Harrisburg, PA 17101 beginning at 9:30am.

MESSAGE FROM ROBERT J. DOLAN, IAC CHAIR

Half the year is now in the books. The stock market has had a volatile ride, as we predicted it would. However, the end results have been positive. To remind us all back before the last Presidential Election, October 30, 2016, the DJIA was 18,142. By the end of 2016 it had jumped to 19,819. In the two years from October 30, 2016 to October 30, 2018 it increased by more than 20% per year, going as high as 26,458. At the end of this quarter, June 30, 2019, it was at 26,600 and a few days later, July 3, 2019, it closed at an all-time high of 26,966!

It has been a historically long Bull Market. An excellent article in the Wall Street Journal on July 8, 2019 by Amrith Ramkumar speaks to the possibility of the bull market continuing to run. There are some negative signs, the inverted yield curve being one, but if the Fed counters that with a rate cut, it could be good. The jobs numbers that came out in late June were better than expected. The trade battles are worrisome.

The article goes on to say that if the Fed lowers rates it will be the first rate cut since 2008! It says there have been 9 rate increases since December 2015, but the rates are still below pre-crisis levels. Many analysts are watching the Fed closely and believe that the market movement will be dependent on Fed action.

So we continue to monitor, but also continue to follow our disciplined investment approach.

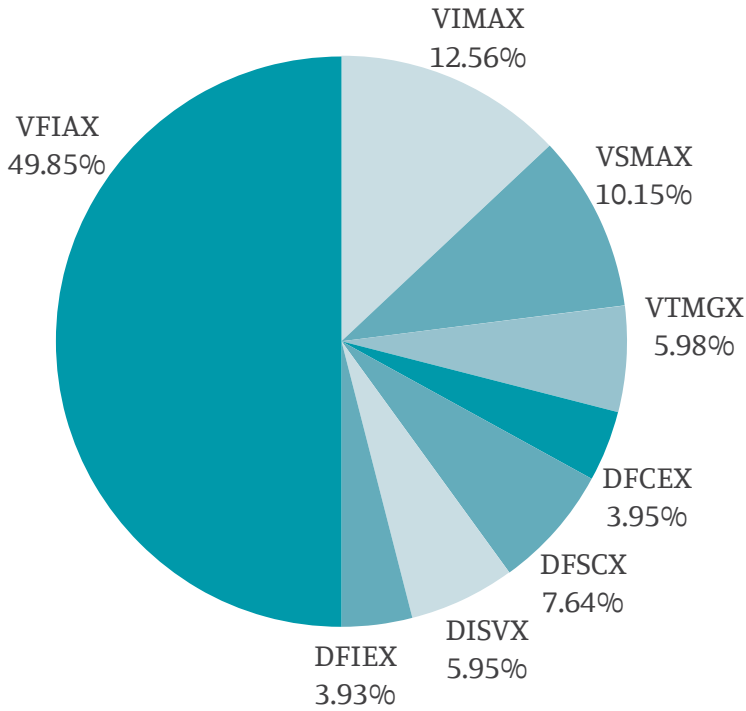
Have a great summer!
Bob

INVESTMENT PERFORMANCE

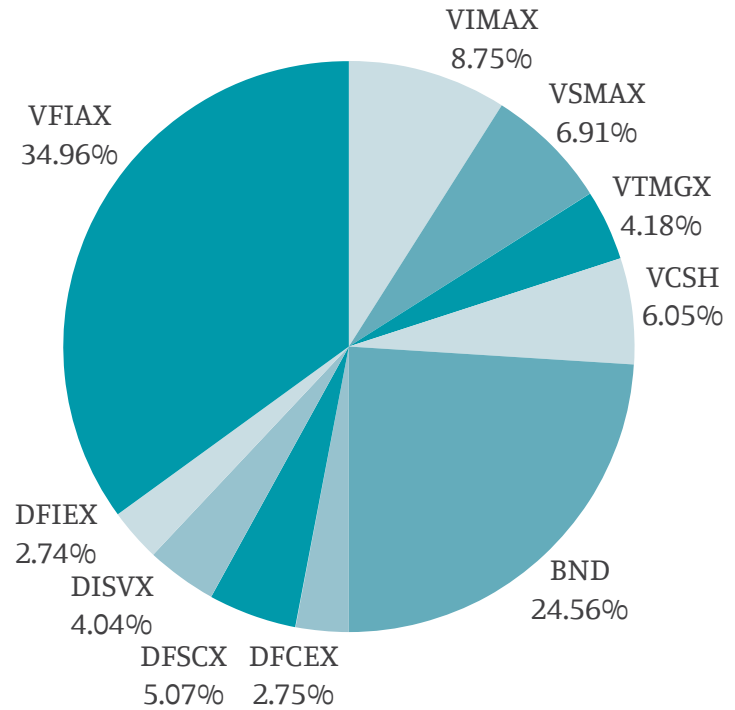
6/30/19 Returns are YTD & 1-3-5-10-13-22 Returns are as of 12/31						
	6/30/19	1 Yr.	3 Yrs.	5 Yrs.	10 Yrs.	Since Inception 23 Yrs.
Model E	17.56%	-8.5%	7.9%	6.2%	12.1%	8.1%
Benchmark*	17.02%	-8.0%	7.7%	5.8%	11.5%	7.8%
*55% S&P 500, 25% Russell 2000, 20% MSCI-EAFE						
Model A	14.15%	-5.9%	6.3%	4.7%	9.3%	7.3%
Benchmark*	13.55%	-6.0%	5.9%	4.6%	9.0%	7.2%
*34% S&P 500, 19% Russell 2000, 17% MSCI-EAFE, 30% BARCAP U.S. Aggregate Bond						
	6/30/19	1 Yr.	3 Yrs.	5 Yrs.	10 Yrs.	Since Inception 15 Yrs.
Model F	6.01%	0.3%	2.2%	1.8%	3.0%	2.9%
Benchmark*	6.11%	-0.1%	2.0%	2.5%	3.5%	3.8%
*100% BARCAP U.S. Aggregate Bond						

QUARTERLY UPDATE FROM THE Investment Advisory Committee

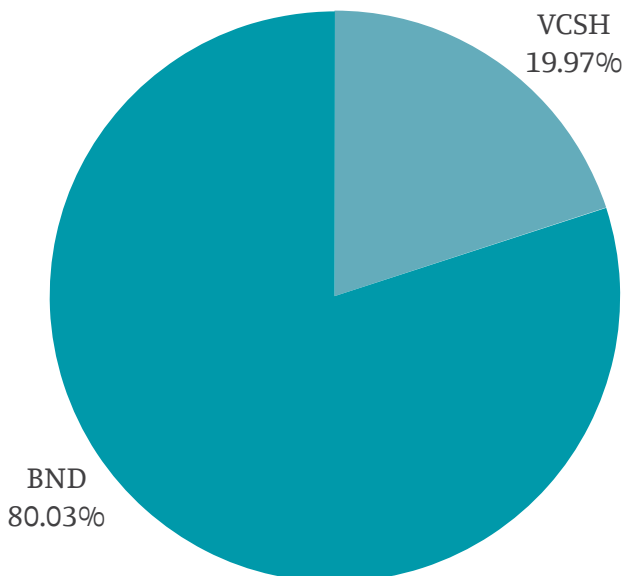
MODEL E PORTFOLIO PERCENTAGES
ASSET VALUE \$53,068,787



MODEL A PORTFOLIO PERCENTAGES
ASSET VALUE \$25,402,397



MODEL F PORTFOLIO PERCENTAGES
MODEL F ASSETS \$1,571,606



FUND LEGEND

DFA Emerging Markets	DFCEX
DFA International Core Equity	DFIEX
DFA Micro Cap	DFSCX
DFA International Small Cap Value	DISVX
Vanguard Index 500	VFIAX
Vanguard Mid Capitalization Index	VIMAX
Vanguard Small Cap Index	VSMAX
Vanguard Developed Markets Index	VTMGX
Vanguard Short Term Corporate Bond	VCSH
Vanguard Total Bond Market Fund	BND

PLANNING FOR THE FUTURE

Have you ever considered establishing an endowment fund for your nonprofit organization, but ended up feeling intimidated by the task? Do you struggle with the idea of spending your income and donations on something other than operating costs? These feelings are understandable, but something you may not have considered is that donors love choice! Creating this permanent funding source for your organization will give your donors more opportunities to give.

Of course it is tempting to spend all received contributions on current operations, especially when so often it feels like every little bit will make a huge difference. While beginning the process of establishing an endowment fund may seem like you are taking funding away from other areas, consider the benefits. By establishing an Agency Fund, you are helping yourself. Since the principal cannot be touched, this fund will generate income for your organization forever! You can depend on this income yearly as either a new funding stream, or a way to continue to grow your endowment.

Endowment funds also send a positive message to your donors: Your nonprofit agency has achieved a key measure of financial stability and intends to carry out its mission for generations to come, forever. Choosing to establish your endowment fund with TFEC adds to that positive message.

There are many benefits to working with us:

- Expertise with complex transactions and deferred planned giving, including gifts made with appreciated securities (including closely held business stock), tangible personal property, real estate, gifts that provide donors with lifetime income (such as Charitable Remainder Unitrusts), and gifts from bequests;
- Accompaniment on calls to endowment fund donors and prospective donors, if desired;
- Marketing assistance by ghost-writing, guest authoring, or editing endowment articles for newsletters, endowment brochures, or websites;
- Legal assistance;
- No auditing costs or taxes paid on fund;
- Accounting excellence and single-fund reporting;
- Increased visibility through TFEC's annual report and website; and,
- Credibility of TFEC, established in 1920.

If you've been considering starting an endowment fund for some time, now may be the perfect opportunity to start! Showing donors that you are planning for your future through the establishment of an endowment fund may motivate them to donate to the fund themselves. Remind donors that by donating to the endowment, they can be part of something bigger. By helping you to establish your endowment fund, they are directly investing in your legacy, and are helping you to better the community. You can establish your Agency Fund with as little as \$200.

Contact Janice Black, President & CEO at jblack@tfec.org or Jennifer Doyle, Vice President of Philanthropy & Community Investment at jdoyle@tfec.org, or [click here for more information on starting your agency endowment fund](#).

AGENCY FUNDS: DID YOU KNOW?

- A TFEC team member is available to meet with donors or potential donors to explain the benefits and ways they can contribute to your fund
- You have free access to counsel as it pertains to your agency fund through TFEC's team and attorney, Spencer G. Nauman, Jr., Esq.
- Every donor to your agency fund is promptly and properly acknowledged for their tax-deductible gift
- You are able to accept complex gifts through your relationship with TFEC — gifts such as closely held business stock, real estate, and anything that is appraisable, such as a coin collection

FEATURED SCHOLARSHIP RECIPIENT: TYLYN CUPP

RECIPIENT OF THE SINGISER FAMILY FUND SCHOLARSHIP

WHAT SCHOOL ARE YOU ATTENDING? University of Pittsburgh

WHAT IS YOUR MAJOR/MINOR? Nursing, BSN

WHY DID YOU CHOOSE YOUR MAJOR? Growing up I was able to see what is involved in a nursing career given that my mother and grandmother are both nurses. For me, however, it was my own personal experiences that truly made me realize that this was the career path for me. At age 4 I was diagnosed with scoliosis and at age 15 had to undergo a spinal fusion after failed bracing attempts. It was my time in the hospital and my experiences with my own nurses that made me determined to someday have the same impact on patients that my nurses had on me. This experience particularly made me interested in the area of pediatrics where I hope to start my career post-graduation.

WHAT YEAR IN COLLEGE ARE YOU? I am currently entering my final year at the University of Pittsburgh and it's hard for me to believe that three years have already gone by. I intend to enter my final year of college with the same sense of motivation and determination I have possessed since my freshman year while making the most of my final months as a Pitt undergraduate.

WHAT IS YOUR FAVORITE THING ABOUT THE UNIVERSITY OF PITTSBURGH? Besides the notable nursing program and abundance of hospitals in the area that I knew would give me tremendous clinical experience, I also decided to attend Pitt because of the lively city atmosphere and endless opportunities to explore and try new things. It felt like a home away from home and I knew I would never get bored.

WHAT DO YOU LIKE TO DO IN YOUR SPARE TIME? I like to spend time with my family and friends, travel, be active, and spend time outdoors doing activities such as hiking and camping. I find it important to create a balance between school and other activities I enjoy in order to keep my mind clear and focused.

WHAT ARE YOUR GOALS? My goals include finishing my senior year strong and acquiring a job where I am truly excited to go to work everyday. I hope to leave work with a sense of satisfaction in knowing that I have made a positive difference in someone's life. After ensuring I have found my interest in a particular specialty I also intend to go back to school to accomplish my ultimate goal of becoming a nurse practitioner. Particularly, I hope to pursue a career in the area of pediatrics where I am getting experience this summer. I am working as a nursing intern at the Children's Hospital of Pittsburgh on their neurological/trauma floor as well as in the emergency department.

WHAT DOES THIS SCHOLARSHIP MEAN TO YOU? To me, this scholarship means that my future goals are now more obtainable. It means that those of the Singiser Family have invested a sense of confidence in me to achieve the goals I have set for myself and for that I am grateful.

HOW DO YOU PLAN TO PAY IT FORWARD AS A RECIPIENT OF ONE OF OUR SCHOLARSHIPS? As a recipient of this scholarship I plan to pay it forward by finishing strong my final year of college and doing what I can to become a well-educated, confident, and competent nurse. It is important to me to express my gratitude for those who provided me with the Singiser Scholarship as they have continued to help support my college education for the past four years.



REGIONAL UPDATES

FRANKLIN COUNTY COMMUNITY FOUNDATION (FCCF)

FCCF will be presenting at the Rotary Club of Chambersburg's October 3rd meeting as well as at the Rotary Club of Waynesboro's November 19th meeting. Join us to learn how you can maximize the impact of your charitable giving! [Click here for more information about FCCF.](#)

MECHANICSBURG AREA COMMUNITY FOUNDATION (MACF)

MACF is hosting community fundraisers at the following restaurants: Isaac's of Rossmoyne & Isaac's of Silver Spring - September 18, 2019
JoJo's Pizza & Pasta - November 14, 2019
[Click here for more information about these fundraisers.](#)
[Click here for more information about MACF.](#)

PERRY COUNTY COMMUNITY FOUNDATION (PCCF)

PCCF held their annual grantee celebration on May 15th at River Bend Hop Farm & Brewery in Newport. Grantees received their checks and got to share a little about their project that PCCF helped fund through the grant. By the end of the night, \$2,475 was raised for the PCCF Community Fund, the fund to which nonprofit organizations apply for grants each year. This year, PCCF gave 12 grants totaling \$23,278. [Click here for more information about PCCF.](#)



THE HOLIDAYS? A BIRTHDAY? A SPECIAL OCCASION?

GIVE THE GIFT OF PHILANTHROPY

Do you ever wonder what to buy the person who already has everything? We have the perfect solution... a charitable gift certificate! When you give a charitable gift certificate you are giving the gift of philanthropy by allowing the recipient to donate the full amount of the certificate to their choice of any nonprofit in the U.S.

For more information or to order charitable gift certificates visit www.tfec.org/charitable-gift-certificates.

LET US HELP YOU AND YOUR CLIENTS



TFEC can partner with you and your valued clients to connect them to the causes they care about most and help them achieve their charitable goals.

SUPPORT TFEC

When you shop at smile.amazon.com, Amazon donates.



OVER \$100,000 GRANTED TO 36 LOCAL NONPROFIT ORGANIZATIONS

\$108,635 in grant funds have been awarded to 36 nonprofit organizations through four competitive grant opportunities submitted to TFEC's February 1, 2019 deadline. All awarded projects will take place during July 1, 2019 to June 30, 2020 and all grant recipients are registered 501(c)(3) nonprofit organizations or utilize a fiscal sponsor. To learn how to apply to these or other TFEC opportunities, visit www.tfec.org and review the grant guidelines. Numerous grant applications were submitted, and the following have been awarded funding for 2019 - 2020:

CHILDREN'S HOME FOUNDATION FUND — The mission of the Children's Home Foundation Fund, a fund of TFEC, is to provide aid to economically disadvantaged children in Cumberland, Dauphin and Perry counties. A total of \$31,000 was distributed to nine organizations for their programs:

- Harrisburg Area YMCA - \$5,000 for Youth Program Fees & Membership Fees: Camp Curtin & East Shore.
- Harrisburg Symphony Association - \$2,500 for Music Education Programs for Children.
- Medard's House - \$1,500 for After-School Safe Space for Teens.
- New Hope Ministries, Inc. - \$4,000 to Support Economically Disadvantaged Children Facing Hunger and Homelessness.
- Retired Senior Volunteer Program of the Capital Region, Inc. - \$2,500 for the Fruit and Fund Project for Steelton-Highspire School District.
- Setebaid Services, Inc. - \$3,000 for Setebaid Diabetes Camps Camperships.
- St. Barnabas Children's Ministry - \$6,000 for 2019 Summer Camp Transportation & Field Trip Fees.
- The Harrisburg Area Riverboat Society - \$2,500 for Free Ecology and History Lessons for School Groups.
- Valley Youth House Committee, Inc. - \$4,000 for Synergy Project - Providing Street Outreach to Homeless Children and Youth 0-18.

FAMILY & CHILDREN'S SERVICES OF LEBANON COUNTY FUND — The Family & Children's Services of Lebanon County Fund, a fund of TFEC, supports nonprofit social service agencies that serve families and children in Lebanon County. A total of \$13,725 was distributed to nine organizations for their programs:

- Big Brothers -Big Sisters of the Capital Region, Inc. - \$500 for Beyond School Walls.
- Developmental & Disability Services of Lebanon Valley - \$1,575 for 2019 Summer Starts Day Camp.
- Girls on the Run of Lancaster - \$2,000 for Empowering Lebanon County Girls for a Healthy Happy Future.
- Lebanon Valley Volunteers in Medicine Clinic - \$2,000 for Family Diabetes Education Program.
- Power Packs Project - \$1,200 for Summer Weekend Wellness.
- Retired Senior Volunteer Program of the Capital Region Inc. - \$1,500 for Summer Fruit and Fun.
- Setebaid Services, Inc. - \$1,850 for Setebaid Diabetes Camp Camperships.
- The Sexual Assault Resource & Counseling Center of Lebanon & Schuylkill Counties - \$2,000 for Engaging Parents & Caregivers in Child Sexual Abuse Prevention.
- VisionCorps - \$1,100 for Youth Services.



THE KIDS TRUST FUND –The Kids Trust Fund, a fund of TFEC created by and in memory of Gary L. Houck, Jr., provides support and services to young children who are living with physical or emotional abuse or neglect. The annual competitive grantmaking program is for nonprofit organizations providing programs and services for children of abuse and their families in the counties of Cumberland, Dauphin, Franklin, Lancaster, Lebanon, Perry and York. The Kids Trust Fund awarded a total of \$40,632 to six organizations for their programs:

- Children's Aid Society - Southern Pennsylvania District Church of the Brethren - \$8,022 for The Lehman Center Crisis Nursery.
- Community Action Partnership of Lancaster County, Inc. - \$10,022 for Domestic Violence Services Prevention Education Program.
- Harrisburg Area YMCA - \$4,522 for Northern Dauphin County Mentoring Program.
- Hoffman Homes, Inc. - \$6,022 for Creation of a Play Therapy Room.
- Leg Up Farm, Inc. - \$6,022 for Animal-Assisted Therapy Group.
- The Sexual Assault Resource & Counseling Center of Lebanon & Schuylkill Counties - \$6,022 for Expanding Sexual Abuse Prevention Education Services in Lebanon County.

PERRY COUNTY COMMUNITY FOUNDATION – The Perry County Community Foundation (PCCF) is a regional foundation of TFEC, whose strategic grantmaking focus is to invest in innovative, collaborative approaches and solutions to community problems, with the goal of funding programs and services with the potential for the greatest impact on the quality of life and positive outcomes for individuals and families living in Perry County. PCCF awarded a total of \$23,278 to twelve organizations for their programs:

- Central Pennsylvania Food Bank - \$3,500 for Reducing Food Insecurity Rates in Perry County through Youth Food Programs.
- Cove Mountain Community Theatre - \$1,500 for CMCT Musical 2019.
- Duncannon Otterbein United Methodist Church - \$2,000 for FaithWorks - Open Table.
- Friends of Spring Township - \$1,350 for Signage for Lynn Sheaffer Dum Memorial Park.
- Historical Society of Perry County - \$2,850 for Clarks Ferry Tavern, Stabilization Planning and Implementation.
- Join Hands Ministry - \$2,000 for Rural Poor Outreach and Empowerment.
- Marysville-Rye Library Association - \$900 for New/Copier/ Printer/ Fax machine.
- Pennsylvania Parks and Forests Foundation - \$1,000 for Enhancing ADA-Accessible Dock with Kayak/ Canoe Racks at Little Buffalo State Park.
- Perry County Literacy Council - \$500 for Outreach to the Rural Poor.
- Retired Senior Volunteer Program of the Capital Region, Inc. - \$1,000 for Supporting our Seniors.
- Setebaid Services, Inc. - \$3,200 for Setebaid Diabetes Camp Camperships.
- The Arc of Cumberland and Perry Counties - \$3,478 for Training Supplies to Improve Health & Safety for Individuals with Intellectual and Developmental Disabilities.

**INTERESTED IN APPLYING FOR
A GRANT BUT NOT SURE
WHERE TO START?**

Check out our Grantseeker
Resources page!



TFEC CREATES EARLY EDUCATION SCHOLARSHIP

According to a report published by the Early Learning Investment Commission and Ready Nation, the current childcare system does not meet the needs of Pennsylvania families or employers. In fact, insufficient childcare options negatively impact families, employers, and taxpayers with an annual economic cost of \$2.5 billion in lost earnings, productivity, and revenue. Challenges such as access, quality, and affordability make the system difficult for children, families, and businesses.

ACCESS. Fifty-seven percent of Pennsylvania residents live in an area where childcare is not readily available, especially care that caters to infants and toddlers or evening and night shifts. Problems with care may result in less time at work and being distracted when on the job. Such productivity concerns cost employers to lose \$400 million annually.

QUALITY. According to PA Partnerships for Children, only 39 percent of childcare in Pennsylvania meets the high-quality standards. Providers struggle with everyday operating costs and staff turnover. This results in a lack of consistent care for children.

AFFORDABILITY. The majority of parents with very young children are in the workforce; there are 430,000 working parents with children under the age of three. Center based infant care averages \$11,560 a year and represents 46 percent of the income a single parent earns. Childcare is unaffordable for many families, especially those with lower incomes.

TFEC understands the importance of all these challenges and created the Early Education Scholarship in response. This scholarship opportunity provides assistance for Pre-Kindergarten programs to children whose families are in financial need. Scholarship funding is available to eligible students ages 3 to 5 years old to attend a quality early learning center or preschool program providing at least two hours of instructional activities per day at a program located in Cumberland, Dauphin, Franklin, Lebanon, and Perry Counties as well as the Dillsburg area of Northern York County.

The first awards were made this month with 12 students receiving a total of \$28,500. Individual scholarships ranged from \$1,500 to \$2,500. While these scholarships are helpful, they only make a dent in many families' yearly costs. As this fund grows, TFEC hopes to be able to provide even more impactful scholarships.

FOR MORE INFORMATION ON OUR EARLY EDUCATION INITIATIVE, CONTACT LESLIE FICK, LFICK@TFEC.ORG, OR JEANNE PREDMORE, JPREDMORE@TFEC.ORG.



3RD ANNUAL HARRISBURG HOOPLA RAISES MORE THAN \$15,000 FOR LOCAL NONPROFITS

#COMPETEFORACAUSE

21 Teams. 159 Participants. 20 Local Nonprofit Organizations. One Goal: To WIN! The third annual Harrisburg Hoopla took place on Saturday, June 1, 2019 at City Island. Hoopla, an event put on by the Emerging Philanthropist Program (EPP), a partnership between TFEC and Harrisburg Young Professionals, is an adult track and field day. Competitors face-off on behalf of their favorite nonprofit, playing games of tug-of-war, tricycle relay races, and volleyball in the hopes of coming out on top.

Part of the proceeds from the event are donated to the nonprofits represented by the first, second, and third place teams. Remaining proceeds go to the EPP endowment fund, a fund of TFEC with a committee made up of EPP class spokespersons. This committee leads an annual competitive grantmaking program for local nonprofit organizations. Check out the rankings below to see where proceeds went this year!



TEAM RANKINGS

THE HAS BEENS | \$4,746
for **SAMARA - THE CENTER FOR INDIVIDUAL AND FAMILY GROWTH**

RIVER WEALTH ADVISORS | \$3,164
for **THE SALVATION ARMY HARRISBURG CAPITAL CITY REGION**

FITNESS U | \$1,582
for **THE FRIENDS OF INTERNATIONAL HOUSE**

**POWER
OF THE
Purse**

POWER OF THE PURSE

Start your weekend early and come ready to shop!

The Fund for Women & Girls' 8th Annual Power of the Purse Fundraiser will take place on Friday, November 8, 2019 at the Sheraton Harrisburg Hershey Hotel over lunch. Join us in celebrating our Women in Philanthropy award recipients, recognizing our new Dream Team members, and shopping our purse and bag-filled silent auction! All proceeds benefit the Fund for Women & Girls. Visit www.tfec.org/wfpop to register.